

STUDY ON THE INFLUENCE OF PATHOGENIC RADIATION ON THE HEALTH OF CITIZENS



BIG THIEVES OF HUMAN ENERGY INSIDE OUR HOME

Why are people today much more often **chronically tired, exhausted, nervous, irritable, anxious, depressed**, and why do they often not feel well?

In contrast to 15, 20 or more years ago, today a far greater number of people come to their doctors with the problem of **exhaustion, chronic fatigue, chronic pain** and **feeling bad**. A complete laboratory, internist and neurological examination of the patient is done, all the findings are completely correct, **AND THE PATIENT STILL FEELS BAD.**

MODERN TERMINATORS OF THE INTERNAL ENERGY FLOW OF THE HUMAN ORGANISM ARE BECOMING AN INCREASING PROBLEM IN TODAY'S TECHNOLOGICALLY DEVELOPED SOCIETY, WHICH YOU ENCOUNTER EVERYDAY IN YOUR HOME, IN YOUR APARTMENT, AND IN YOUR WORKPLACE!

Have you ever wondered, who could be the biggest thieves of **your life energy** inside your home or inside your office?

TECHNICAL SOURCES OF RADIATION IN THE HOME



MOBILE DEVICES



TELEPHONE DEVICES



WI-FI DEVICES



LAPTOP DEVICES



TV DEVICES



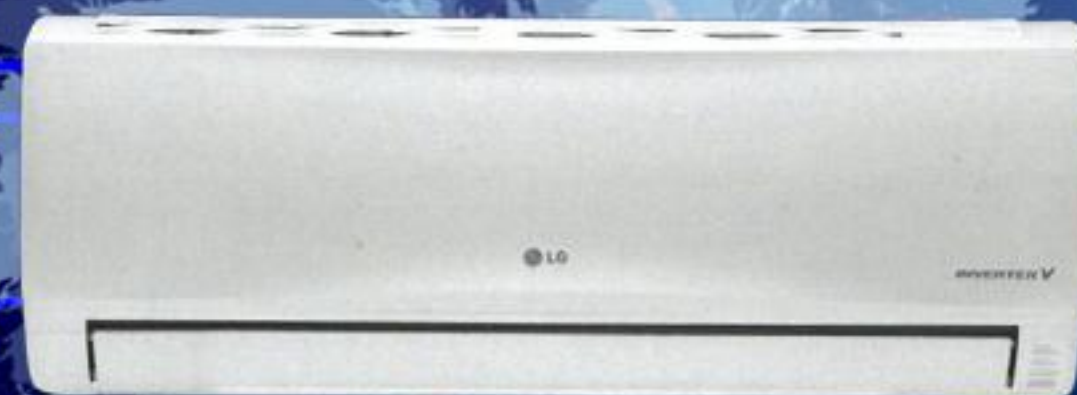
MICROWAVE OVEN



RADIO DEVICES



PC AND TABLET DEVICES



AIR CONDITIONERS



IT IS ABOUT AN EXTREMELY DENSE NETWORK OF COMPLETELY INVISIBLE FREQUENCIES, WHICH WE CANNOT SEE OR HEAR, WHICH WILL INTERWIDE ALL AROUND US AND PASS THROUGH OUR BODIES, JUST AS THEY PASS THROUGH THE WALLS OF HOUSES AND APARTMENTS.

THERE IS ONE HUGE THIEF OF HUMAN ENERGY THAT IS GETTING STRONGER, and you meet him every day in your house, your apartment, and also at work!

These are RADIATIONS OF TECHNICAL DEVICES AND WIRELESS TECHNOLOGIES, which surround us from all sides wherever we are, they are created by man himself through rapidly growing TECHNOLOGY REVOLUTION, and they are called ELECTROMAGNETIC RADIATION.

They are produced by modern technical devices, repeaters, satellites, computers, circuits, mobile phones, etc. that we use in our homes. YOU CANNOT SEE THEM, YOU CANNOT HEAR THEM, and they represent an increasing threat to human health!

The radiations of technical devices pass through our body, pierce us, and thus drive our organism to spend a lot of ITS INTERNAL ENERGY, in order to defend itself from them.

HARMFUL RADIATION IN YOUR HOME TOO!

CURRY'S KNOT
(BLACK DOT)

CURRY'S LINE

CURRY'S LINE

HARTMANN'S KNOT

HARTMANN'S KNOT

UNDERGROUND WATER FLOW



TV, COMPUTERS



SUBSTATIONS,
SATELLITES



REPETITORS



MOBILE PHONE,
TABLET, LAPTOP



WI-FI ROUTERS

In the last 10-15 years, we have surrounded ourselves with a lot of **WIRELESS TECHNICAL DEVICES**, which help us to live more comfortably and modernly. Today's personal and business life would be almost unimaginable without many of them. It just so happens that technology helped all of us to live more comfortably and more modernly, and unfortunately this progress brought with it **NEW RISK FACTORS**, which now threaten human health more and more seriously!

We can ask ourselves how many **MOBILE PHONES** we all have in one household? How many **TABLETS, LAPTOP AND COMPUTERS** do we have? We all have a **WI-FI ROUTER** on **24 hours** a day, which allows us to have the strongest **4G** and **5G network** possible, so that our Internet signal is as strong and as fast as possible. **MICROWAVE?**

Furthermore, there are **cordless telephones, television, radio, refrigerator, washing machine, dishwasher, boiler, neon lighting, electrical circuits in the walls, electric cables on the floors, etc.**

And when you're at work, there are powerful **scanners, copiers, fax machines, printers, etc.** Important is to note that natural pathogenic radiation is also present in our homes, it is especially exhausting in the place of sleep, which can have a very bad effect on our health, considering that we spend **1/3** of our lives in our bed. That's why it's important to start paying more attention to what we sleep on, and whether we might be sleeping in an energetically very bad place. Particularly pathogenic are the intersections of the radiation of the **underground water flow, Hartmann** or **Curry radiation**. Then these are definitely very exhausting and even quite dangerous places to sleep for the human organism.

EXTERNAL SOURCES OF RADIATION ENTERING OUR HOMES



DISTRIBUTION SUBSTATIONS



TRANSMISSION CONDUCTORS



COMPACT SUBSTATION



REPEATERS AND BASE STATIONS



EARTH SATELLITES



SATELLITES AND RADARS

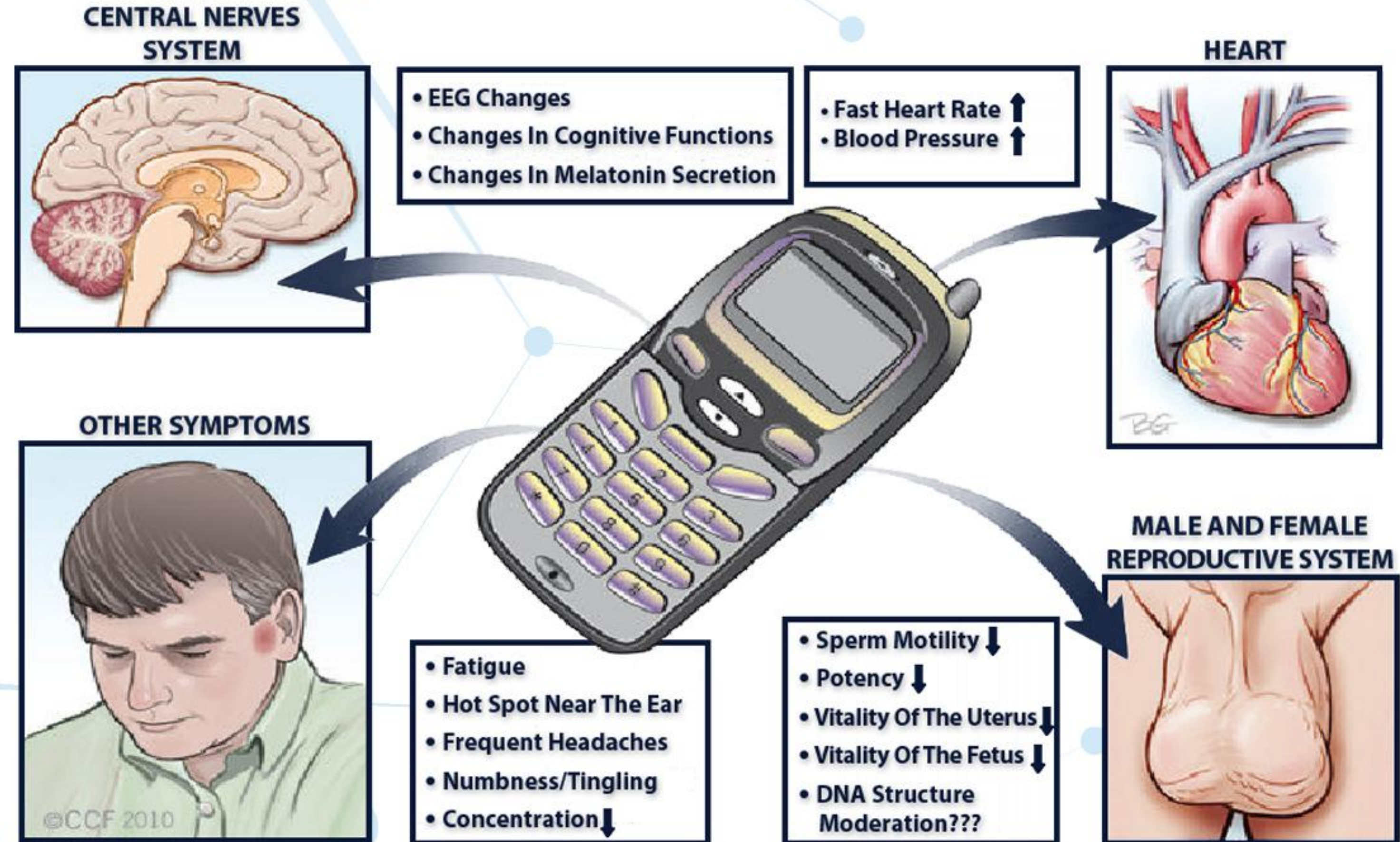
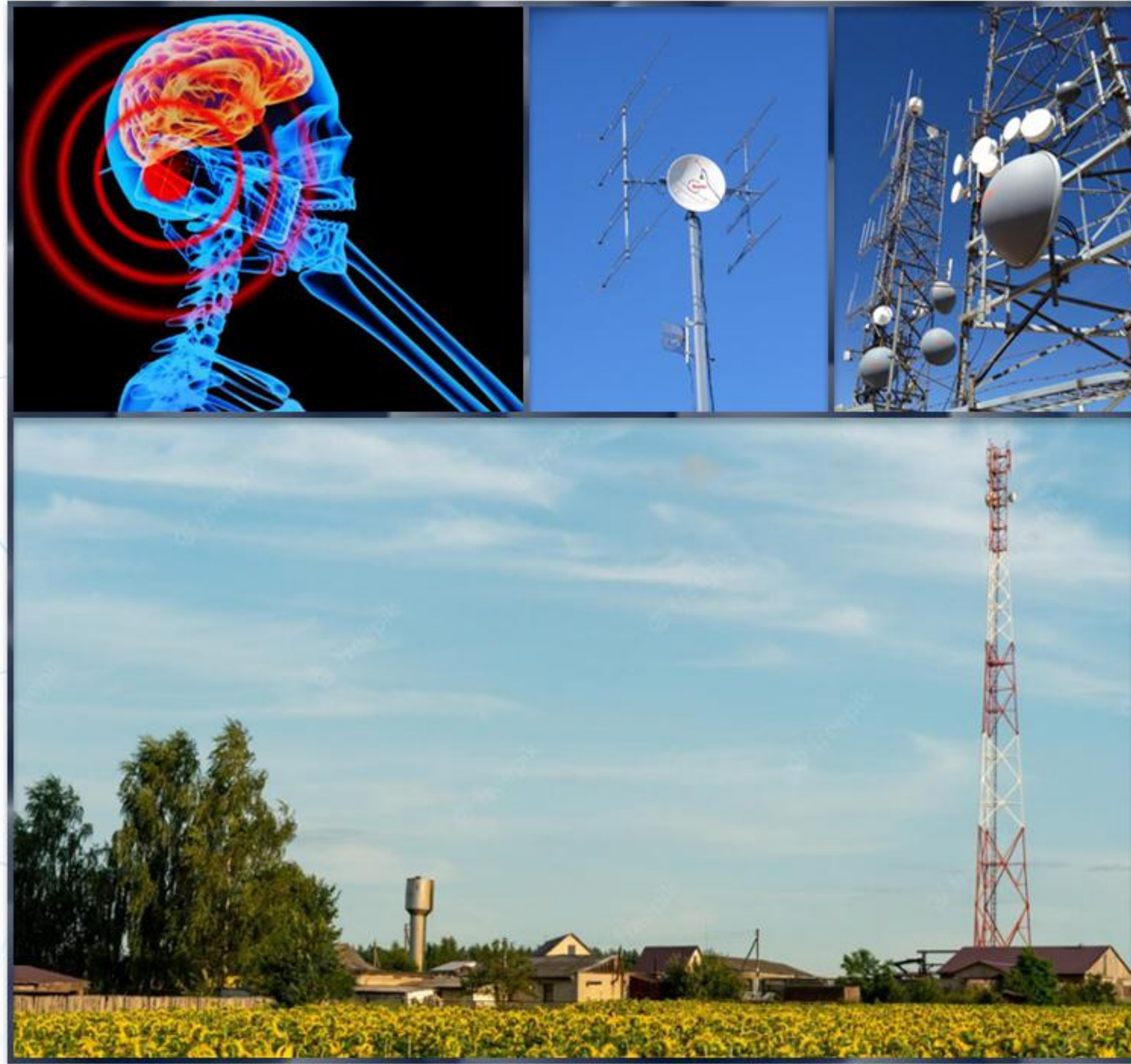
Did you pay attention to the fact that somewhere in your neighborhood there are several dozen strong **MOBILE SIGNAL REPEATERS**?

Are there any in the immediate vicinity of your living or business space?

Among the very powerful sources of **STRONG ELECTROMAGNETIC RADIATION**, THERE ARE ALSO SUBSTATIONS, TRANSMISSION LINES, SATELLITES IN THE SKY WHICH ENABLE THE FUNCTIONING OF REPEATER AND OUR MOBILE PHONES, SATELLITES THAT PROVIDE TOP TRAFFIC NAVIGATION, STRONG STREET NEON LIGHTING IN YOUR STREET AND A BRAND NEW 5G NETWORK...



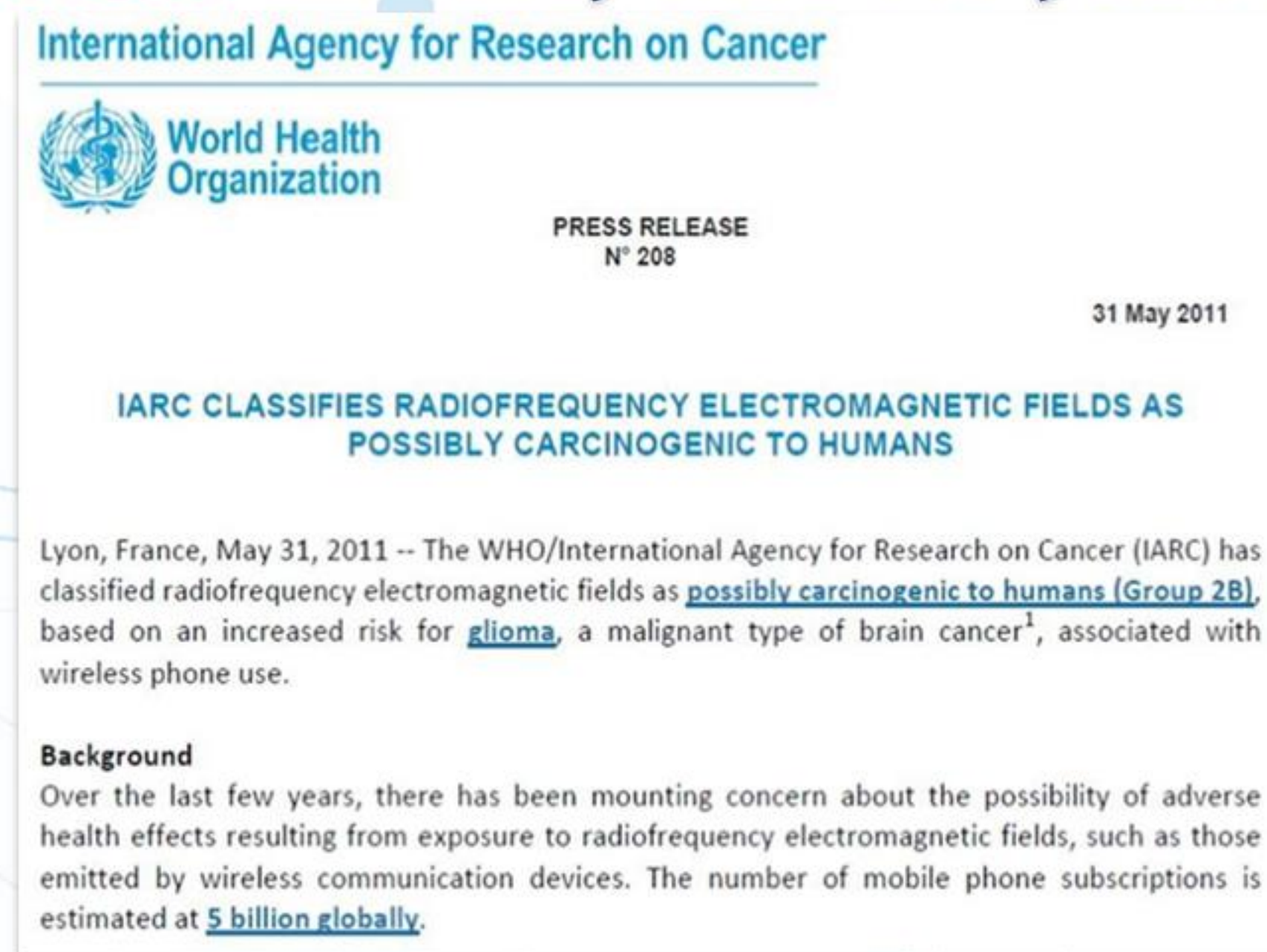
ELECTROMAGNETIC RADIATION (EMR) is estimated to be 100 to 200 million times stronger than it was 100 years ago.



ELECTROPOLLUTION - Latest Science Reveals MECHANISM OF DAMAGE AT THE CELLULAR LEVEL
from an article by **Dr. Sherrill Sellman, ND**, published in **NEXUS** Magazine, August-September 2007.

Everything that we have listed represents a serious potential threat to our health, because our organism has not evolved to adapt to such rapid technological progress, so there is an increased consumption of energy by our immune system, which the frequency of radiation recognizes it as something unnatural and becomes increasingly exhausted in the constant fight against it.

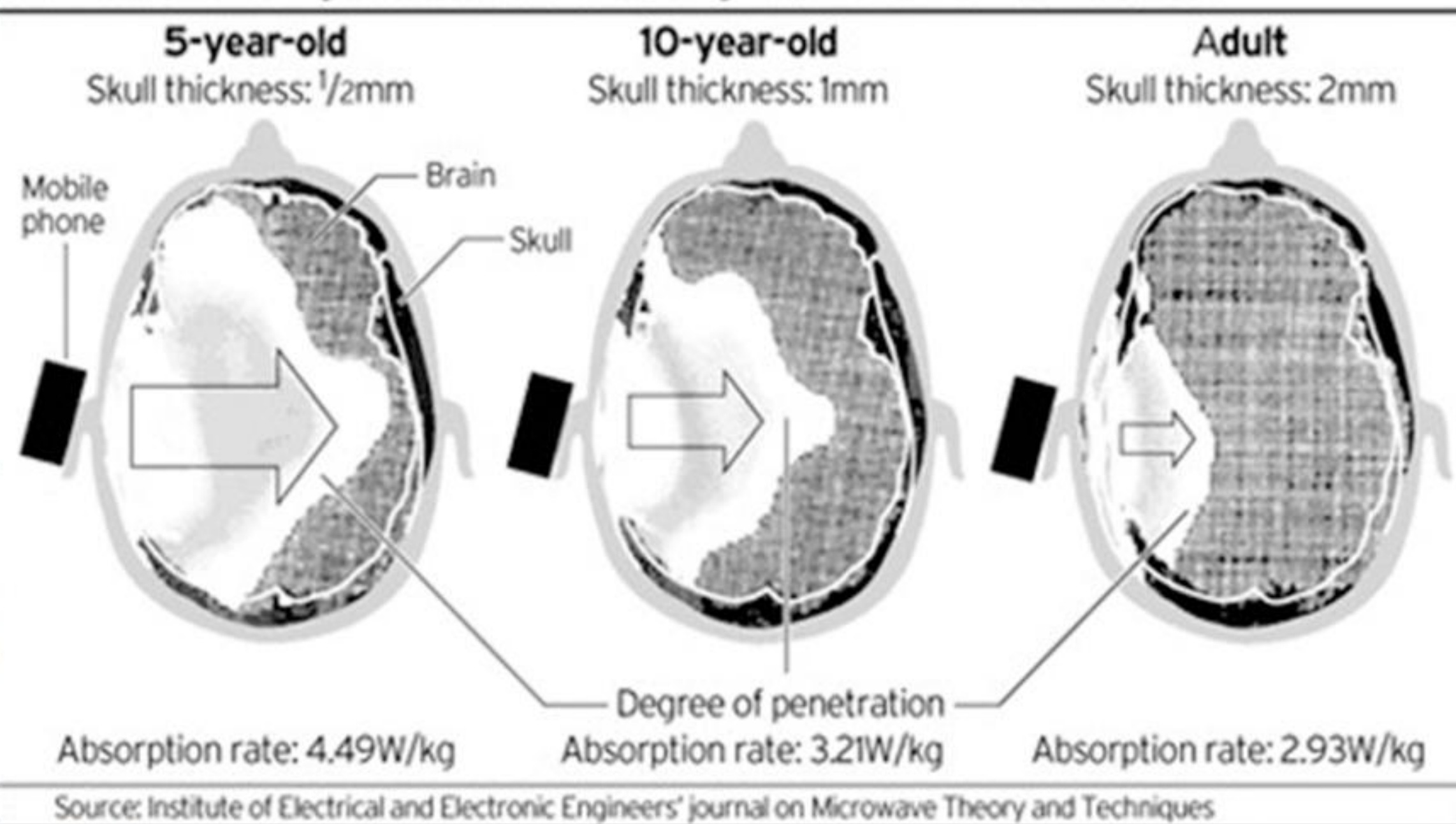
Precisely because of the **HUGE QUANTITY OF TECHNICAL DEVICES WITH WHICH WE ARE SURROUNDED, WITH MODERN POWERFUL, WIRELESS 4G and 5G TECHNOLOGY**, scientists estimate that **ELECTROMAGNETIC RADIATION FREQUENCIES ARE 100 to 200 MILLION TIMES STRONGER TODAY** than they were 100 years ago!



ON THE SLIDE YOU CAN SEE THE OFFICIAL DOCUMENT OF THE WORLD HEALTH ORGANIZATION, THEIR AGENCY FOR CARCINOMA RESEARCH. WITH THIS DOCUMENT, **THE WORLD HEALTH ORGANIZATION ON 31.05.2011. DECLARED MOBILE PHONES - POTENTIALLY CARCINOGENIC!**

HARMFUL MOBILE RADIATION

How mobile phone radiation penetrates the brain



In this picture you can clearly see how deep the harmful **ELECTROMAGNETIC FREQUENCIES** penetrate into the brain, when the **MOBILE SIGNAL REPEATER CONNECTS WITH OUR MOBILE PHONE**.

The first picture shows the head and brain of a **FIVE-YEAR-OLD CHILD**! Another picture shows the head and brain of a **TEN YEAR OLD CHILD**! The third picture shows the head of an adult.

ALL THREE PERSONS ARE TALKING ON MOBILE PHONES DURING THE RECORDING!

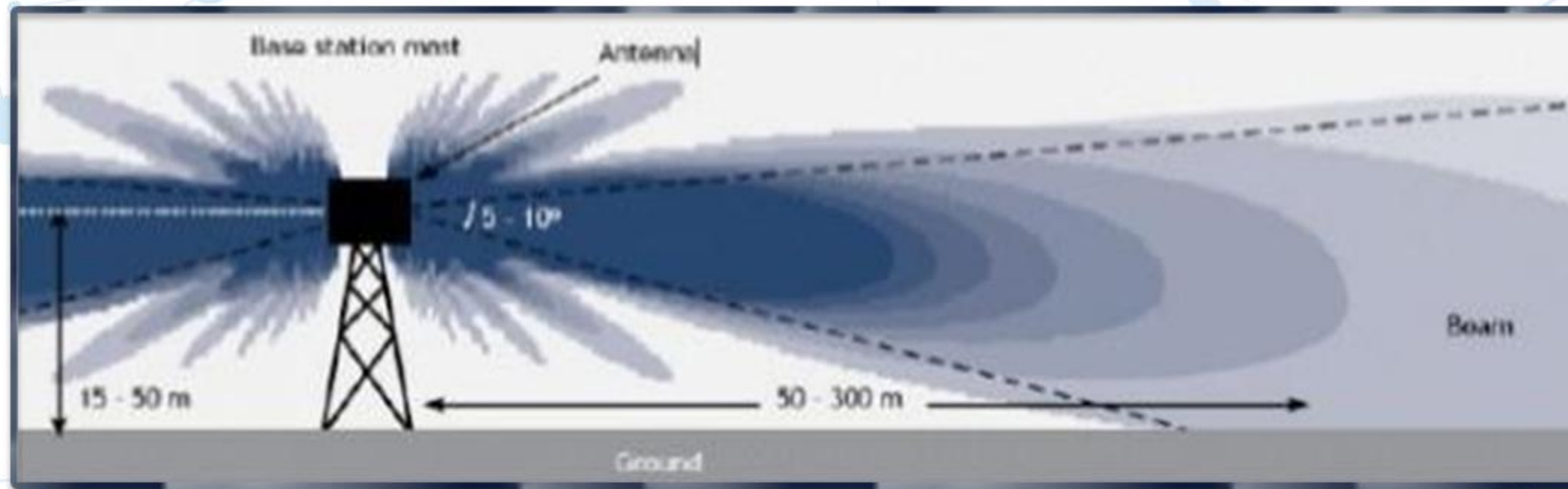
Notice how deep **DURING THE MOBILE PHONE CONVERSATION, ELECTRO-MAGNETIC FREQUENCY** penetrates in child's **BRAIN**, and how deeply it penetrates in an adult. The thickness of an adult's skull reduces very deep penetration.

Every parent, when they see these pictures, can't care less. The message is very clear. It is necessary to **PROTECT AND STRENGTHEN THE ENERGY FLOW OF THE CHILD'S AND ADULT'S HEAD WHILE TALKING ON A MOBILE PHONE, IN ORDER TO REDUCE THE HARMFUL EFFECT ON THE NEURONS IN THE BRAIN, WHICH ARE VERY SENSITIVE TO THE AGGRESSIVE FREQUENCIES OF SUCH STRONG ENERGY SHOCKS OF EMF RADIATION FREQUENCIES.**

Today, it is clear to all of us that the big thief of human energy is the strong battery of the mobile phone that radiates, and from which we do not separate even during sleep. No matter how hard we try, **CHILDREN CANNOT BE FORBIDDEN** from using **cell phones, tablets, laptops,** and other **wireless technology.** But in the modern world it is not even necessary. It is enough to **install modern frequency protection on mobile devices** and place it in the living space, with which we have made the use of modern technologies and life in their environment much safer, thus protecting the health of all household members in the long term.



HARMFUL RADIATION OF REPEATERS



We are witnessing **LARGE ASSOCIATIONS OF CITIZENS**, who **NO LONGER ALLOW STRONG REPETITIONERS MOBILE SIGNALS, SATELLITE AND RADAR ANTENNAS** to be installed near their houses and apartments, because after their installation a large number of people begin to experience numerous health problems, and it is suspected that this is also one of the causes of the increased statistics of cancerous diseases. There is a strong electromagnetic radiation that can be measured with available devices. The distance of repeaters from houses and apartments is always legally correct, because according to the measurements of **EMF RADIATION STRENGTH**, they are placed at a prescribed distance that is sufficient not to harm human health. But what is not talked about - **THE PATHOGENICITY OF EMF RADIATION EXISTS** (it cannot be measured with existing measuring instruments) that spreads much, much further than the strength of the radiation, and it is a hidden factor that creates numerous health problems in people, of which **CHRONIC FATIGUE, INSOMNIA, IRRITABILITY AND LOW MOOD ARE THE MOST COMMON SYNDROMES.**

SCIENTISTS AROUND THE WORLD ARE WARNING THAT THERE IS A HIGH PROBABILITY THAT THE PATHOGENIC SPECTRUM OF HARMFUL ELECTROMAGNETIC FREQUENCIES BECOME AN "INVISIBLE KILLER"!

This means that YOUR ORGANISM HAS TO SPEND A HUGE AMOUNT OF ITS INTERNAL IMMUNE SYSTEM ENERGY DURING THE DAY, FIGHTING AGAINST EVERYTHING AROUND YOU RADIATING ELECTROMAGNETIC FREQUENCIES!

It must be much clearer to you now, why far too many people today struggle with chronic fatigue and exhaustion, low mood, why they are much more nervous, quarrelsome, tense, over-stimulated, under stress, anxio-depressive, often sick and much more often they feel bad, as if they lack vital energy!

Scientists assume that all of this can be connected with the epidemic of high blood pressure in increasingly younger age groups of people, also with the rapid epidemic of diabetes, and there is a very reasonable suspicion that the risk of more serious and cancer-causing diseases is several times higher today than ever before!

STRENGTH OF EMF RADIATION - PATHOGENICITY OF EMF RADIATION

THE PATHOGENIC RADIATION of the installed repeater (or **substation, radar, satellite...**) extends several hundred meters beyond the legally defined distance obtained by measuring the **EMF RADIATION STRENGTH**, and this can best be explained on the example of the **TEST WITH BEES**, which have a much more sensitive vegetative nervous system than humans. At a distance of approx. **500 meters** from **450 hives** of strong bee colonies, a cell phone signal repeater was placed. From the first day, the bees started behaving strangely, they became disoriented, older bees lived shorter, the productivity of the queens decreased significantly, there were fewer bees in the hives, the colonies became very weak, the bees became much more aggressive, their swarming drive increased significantly so that they left their hives massively in search of a more suitable place to live. Within a year, the communities weakened so much that honey production fell from **15 tons** a year to less than **6 tons**. When **POZITRON PLUS** was placed next to the hives, it neutralized **PATHOGENIC SPECTRUM** of repeater radiation, and within 3 months the communities fully recovered, became even stronger and more productive.

This very clearly explains the difference between **STRENGTH AND PATHOGENICITY OF EMF RADIATION** - which reaches several hundred meters beyond the legally prescribed **STRENGTH OF RADIATION**. That's exactly the **COVERED THIEF OF YOUR ENERGY** that is in our immediate vicinity, as evidenced by numerous people who, after installing repeaters in the vicinity of their buildings, began to feel and complain massively, that something with their health is not right...

WHERE DO YOU CARRY YOUR CAR KEYS?

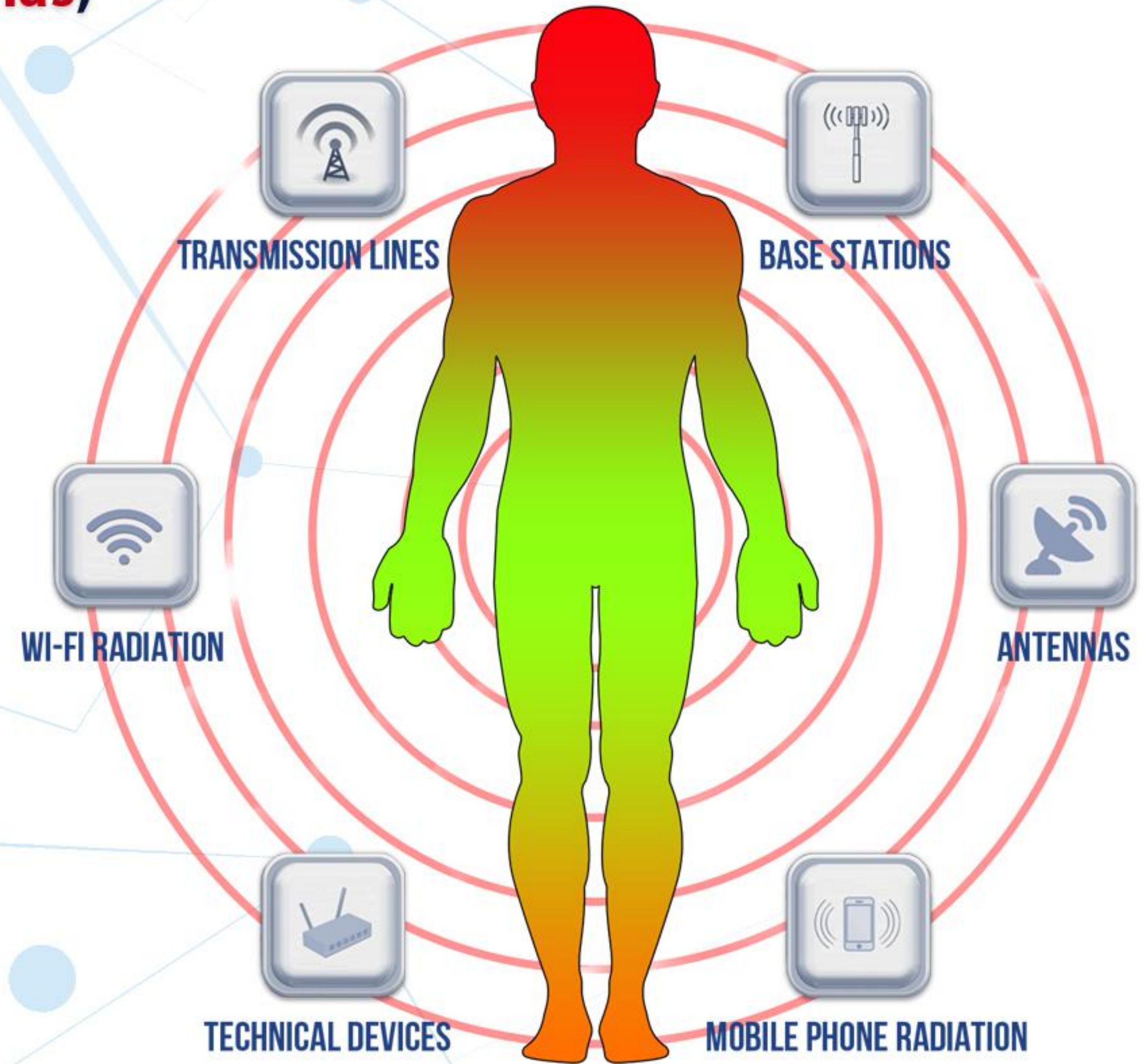
Also, in the same context, the increasing frequency is worrying **INFERTILITY IN YOUNG COUPLES** all over the world! And this is connected with **DAILY CARRYING A MOBILE PHONE AND REMOTE CAR UNLOCKING KEYS IN YOUR POCKET!**

The keys have a very powerful battery, which has a service life of several years. It is a realistic assumption that because of this, an increasing number of young people have major problems with **CONCEPTION AND INFERTILITY**. Since it is about the **STRONG ELECTRO-MAGNETIC RADIATION OF THE BATTERY ITSELF**, which with its aggressive frequencies possibly very strongly destroys the flow of energy through the **TESTIS AND PROSTATE** in young men, and the same aggressive effect on the **OVARIES**, Ovarian tubes and uterus in young women!

In adult men, carrying keys and mobile phones in your pocket is associated with **WEAKNESS OF LIBIDO**, premature loss of sexual power, and problems with the prostate and bladder. That's why it's smart to **PROTECT THE MOBILE PHONE**, so within a radius of 1 meter, the **PATHOGENIC RADIATION OF THE CAR KEY BATTERY** is automatically **NEUTRALIZED!**

POSSIBLE NEGATIVE EFFECTS OF EMF ON:

- **cardio - vascular system** (hypertension, arrhythmias, tachycardia)
- **central nervous system**
- **spine** (chronic pain)
- **joints** (cartilage, lubrication)
- **arthritis** - inflammation, degeneration of joints
- **weaker blood and lymph microcirculation**
- **internal organs** (kidneys, bile ducts, fallopian tubes, intestines, prostate, etc.)
- **psychological disorders** (low mood - anxiety - depressive syndromes)
- **frequent migraines, headaches**
- **thyroid hormone disorders**
- **chronically weakened immunity**
- **a large increase in cancerous diseases**



ELECTROMAGNETIC WAVES are all around us, and the **HARMFUL INFLUENCE** of their frequencies today it is 80% stronger than 20 or more years ago!

SCIENTISTS CLAIM that **EMFs** are becoming **INVISIBLE KILLERS**, because **COMPLETELY NEW HEALTH DISORDERS** appear **IN PEOPLE**, AND **MODERN FREQUENCY MEDICINE** CALLS THAT NEW TYPE OF DISEASE - **ELECTRO STRESS**, that is, **ELECTRO - SENSITIVITY**.

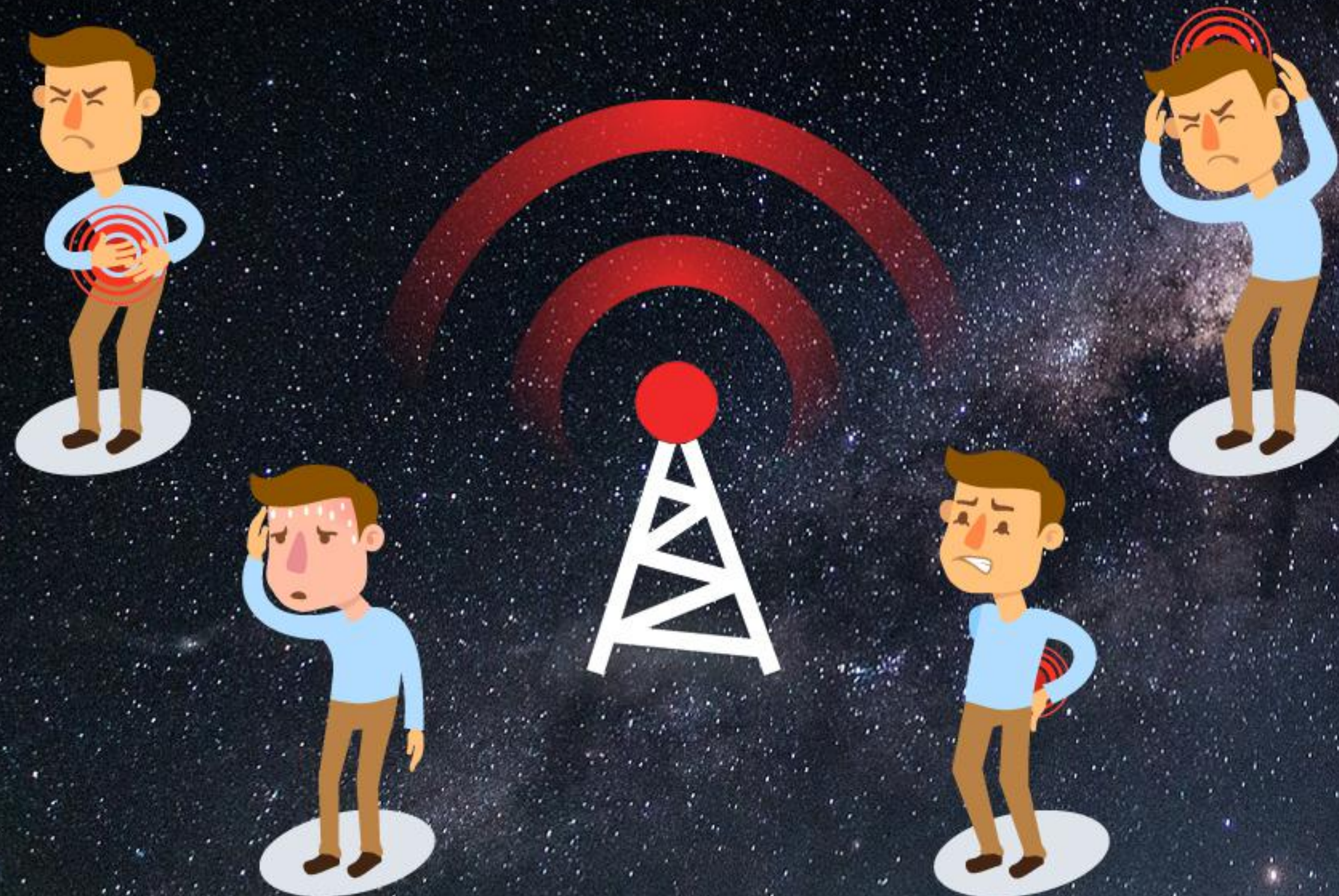
The **WORLD HEALTH ORGANIZATION** announces that **CHRONIC FATIGUE, WEAKER MOOD, STRESS, ANXIETY, DEPRESSION**, and **SLEEP DISORDERS** are becoming one of the leading causes of illness among us modern people.

In addition, the most frightening fact is that people are suffering from various cancerous diseases at an ever younger age, which scientists mostly associate with **ELECTRO STRESS!**

The negative effects of **EM frequencies** can cause **PROBLEMS WITH THE HEART, NERVES, PAIN SYNDROMES OF THE SPINE AND JOINTS, WEAKEN THE CIRCULATION, CAUSE PROBLEMS WITH THE GLANDS and HORMONES, SIGNIFICANTLY WEAKEN IMMUNITY** and **SIGNIFICANTLY INCREASE THE RISK OF CARCINOGENIC DISEASES!**

CONCLUSION

**HARMFUL RADIATION IS ALMOST 80%
MORE DANGEROUS TO HUMAN HEALTH
TODAY THAN 20 AND MORE YEARS AGO!**



WE CAN CONCLUDE THAT THE HARMFUL INFLUENCES OF ELECTROMAGNETIC RADIATION EXHAUST HUMAN ENERGY BOTH DAY AND NIGHT, AND THE HARMFUL INFLUENCES OF GEOPATHOGENIC RADIATION EXHAUST HUMAN ENERGY AT NIGHT (if the bed is placed in an energetically bad place)!

What is not good for us and for our children, IS THE FACT THAT THEIR INFLUENCES ARE DUPLICATED, AND THAT IS WHY OUR IMMUNE SYSTEM SPENDS ITS ENERGY TOO INTENSIVELY BOTH DAY AND NIGHT! And in the history of the human race, it was never so pronounced!

THAT'S WHY THE ENERGY FLOW THROUGH OUR ORGANS AND ORGAN SYSTEMS, and this leads to CHRONIC FATIGUE AND A GENERAL DECLINE OF OUR BODY'S IMMUNITY!

Precisely because of this, today there are far greater predispositions for a more serious health disorder to manifest much faster, and at an ever younger age!

Because of all of the above, it is important to understand what the environment is like in which we live, and it is wise to look for available means of protection, in order to protect yourself and your family's health in the best possible way. Thus, we can live in a much safer way in an environment full of aggressive frequencies, and with even higher ones happily use new technologies, and enjoy all the benefits that the further rapid development of wireless technologies allow us.



HOW LOADED IS YOUR LIVING SPACE WITH ELECTRO SMOG/PATHOGENIC RADIATION

To get a better idea of the topic we are writing about, you can test your own space where you live or work, and you can determine for yourself how much it is loaded with harmful frequencies from different sources of radiation.

What you will find, many of you will not like.

We recommend that you install the application on your mobile phone called - **ELECTROSMART**.

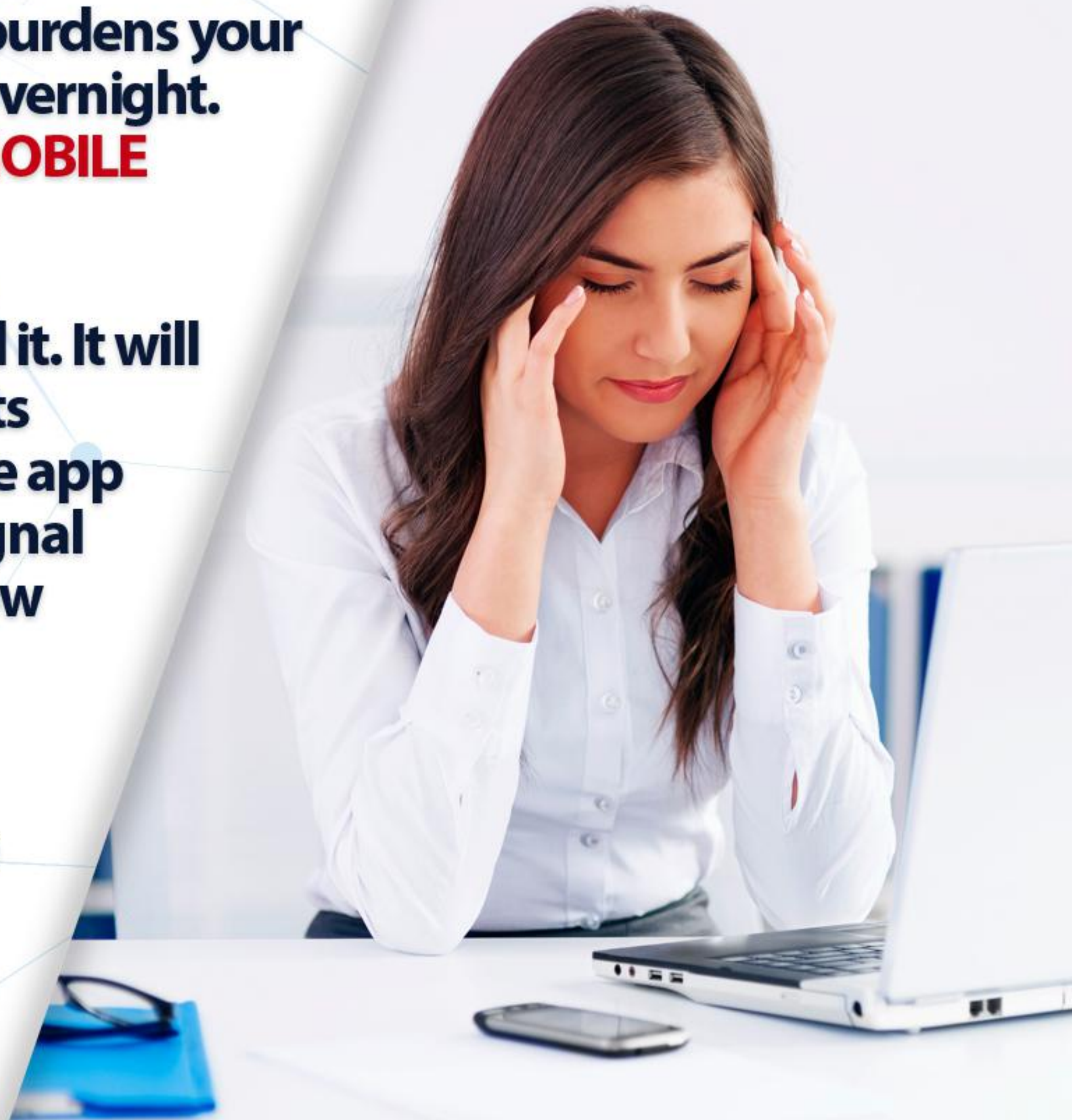
You have a **WI-FI ROUTER** in your home. With him your life space is well covered and that's why you have an excellent and fast internet signal and thanks to a modern **4G** or **5G** network. Is that right?

You must have heard of the recommendation that at night when you go to sleep, **TURN OFF THE WI-FI ROUTER**.
Do you practice it?

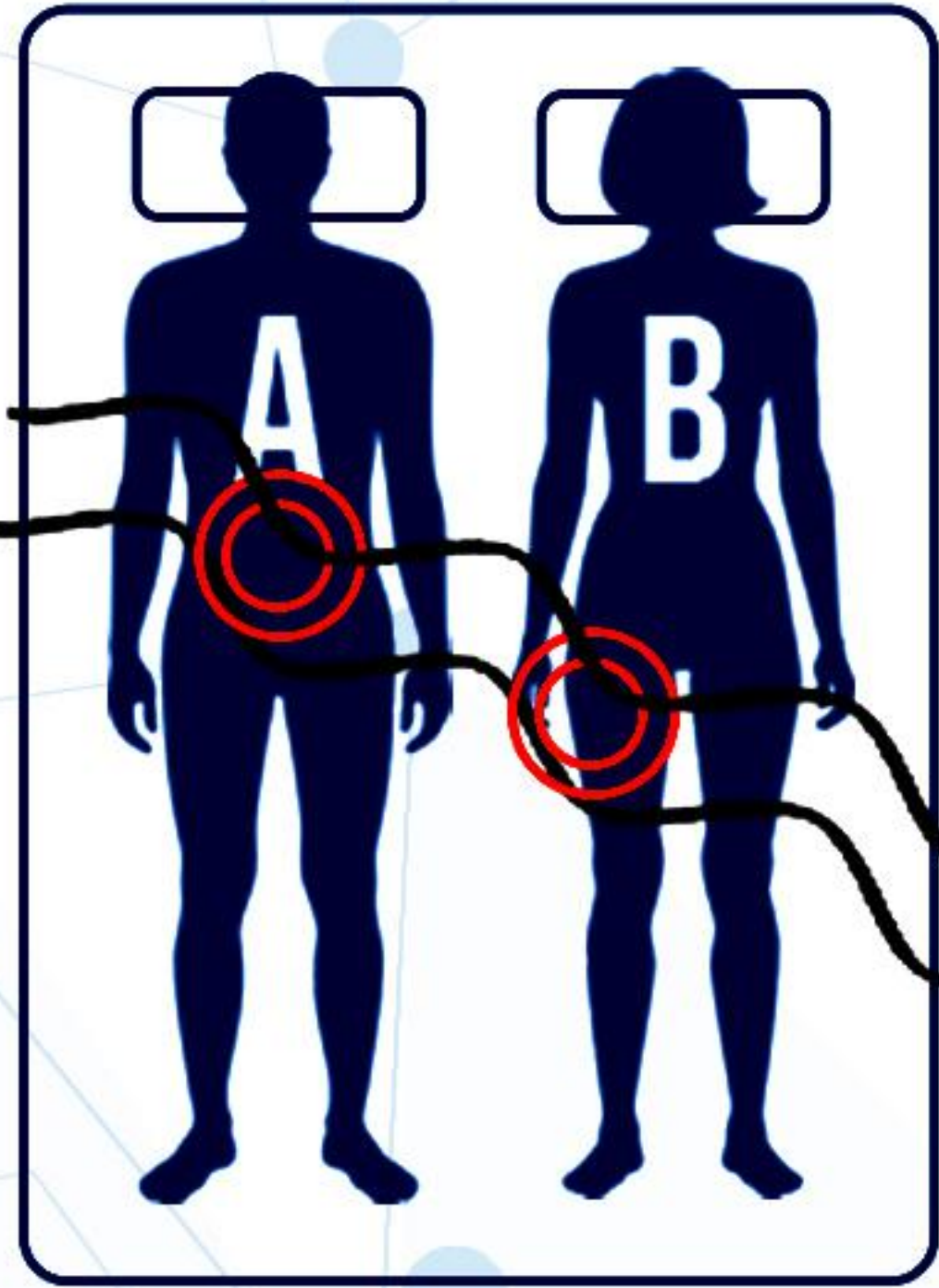
This is highly recommended due to the **VERY AGGRESSIVE FREQUENCIES AND STRONG RADIATION** of the **4G** or **5G** network. Through this application you can read the volume signal of your **ROUTER**, it will also tell you numerically how many **ROUTERS** your neighbors have that also burdens your home. And it is not possible to turn off the neighbors' **ROUTERS** overnight. Also, with the help of the application, you can count how many **MOBILE SIGNAL REPEATERS** and with what power they load your space.

An even better app is **ARCHITECTURE OF RADIO**. Be sure to install it. It will clearly show you how many **REPETITORS** it breaks through with its frequencies your home and how far they are from your home. The app will also show you how many **WI-FI ROUTERS** with their strong signal break through your residential or office space. It will show you how many **SATELLITES** frequencies right now at this moment is passing through you in your apartment... It will also show you the total pollution space and environment with **ELECTRO SMOG**, so you will determine for yourself that today we are already literally bathing in **ELECTRO SMOG**...

With the application **WATER DETECTOR** in the bedroom you can detect by yourself whether the underground water flow passes over your bed, and which part of your body is affected.



NATURAL PATHOGENIC RADIATION



HARTMANN'S NETWORK

- BRAIN TUMOR
- STROKE
- THYROID CANCER (WOMEN)
- TRACHEA CANCER (MEN)
- BRAIN TUMOR



- HYPOTHERISM
- SORE THROAT
- DIABETES
- THE CERVICAL SPINE

UNDEGROUND WATER FLOW



- CHRONIC FATIGUE
- HEART ATTACK
- STOMACH CANCER
- COLON CANCER
- PANCREAS CANCER
- PROSTATE CANCER



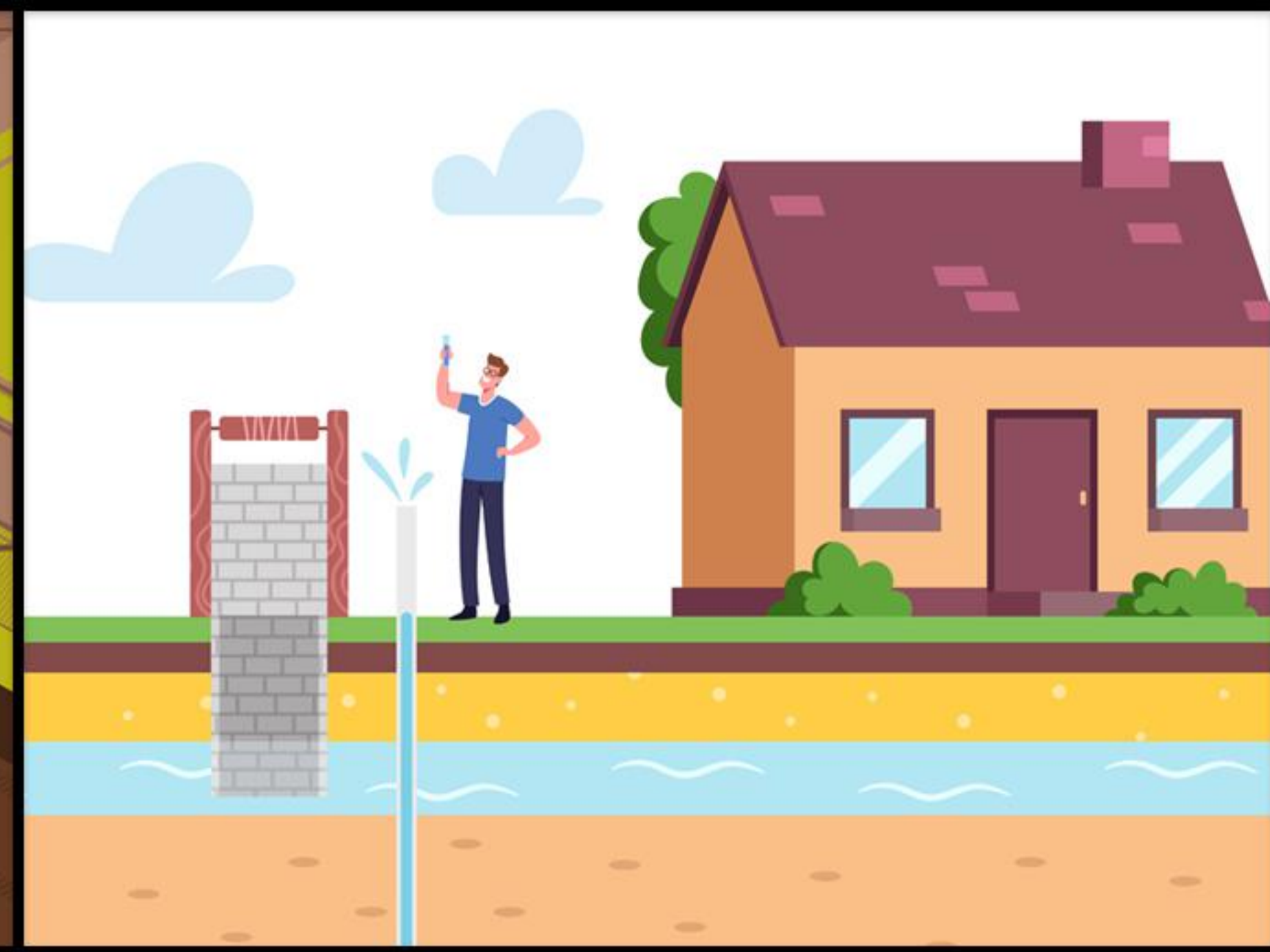
- UTERUS CANCER
- BREAST CANCER
- GALLBLADDER CANCER



- FORGETTABILITY
- LACK OF CONCENTRATION
- SINUS INFECTION
- THROAT INFLAMMATION
- IMPROPER THYROID FUNCTION

Except for **TECHNICAL RADIATION**, which is created by a man himself. **HARMFUL** ones are proven to be present in our apartments and houses like **GEOPATHOGENIC RADIATION** - **HARTMANN RADIATION**, **CURRY RADIATION** and especially dangerous radiation from **UNDERGROUND WATER VEINS**!

Groundwater radiation is indeed one of the **MOST DANGEROUS RADIATION FOR HUMAN HEALTH**! These radiations are produced in the depth of the **EARTH'S CRUST** due to the creation of vibrations of very fast underground flows of water, oil or gas, whose movement speed is even up to 15L per second.



WATER IN THE DEPTH OF THE EARTH MOVES AT A SPECIFIC SPEED, IT CRASHES AGAINST MINERALS AND ROCKS THROUGH WHICH PASSES, THUS CREATING A STRONG ENERGY VIBRATION, which spreads towards the surface of the earth. It is also STRONG ELECTROMAGNETIC RADIATION, only it was created in nature, so it was not created by man!

If you accidentally placed the bed in such an ENERGETICALLY BAD PLACE, which you are not at all aware, you also have a very STRONG THIEF OF YOUR ENERGY IN YOUR OWN BED, SLOWLY BUT SURELY EXHAUSTING YOU EVERY NIGHT WHILE YOU SLEEP, FOR MONTHS AND YEARS IT WEAKENS YOUR IMMUNITY!

MEASUREMENT OF ENERGY FLOW WITH DEVICE FOR ELECTRO - ACUPUNCTURE



With the help of the **ELECTRO-ACUPUNCTURE** device, it is possible in just 20 minutes to estimate **WHETHER THE INFLUENCE OF VERY AGGRESSIVE ELECTROMAGNETIC FREQUENCIES ON THE HUMAN ORGANISM INSIDE A RESIDENTIAL OR BUSINESS SPACE IS TOO STRONG, OR IT IS WITHIN THE OPTIMAL LIMITS WHICH DO NOT DISTURB ENERGY POTENTIAL OF THE HUMAN ORGANISM...**

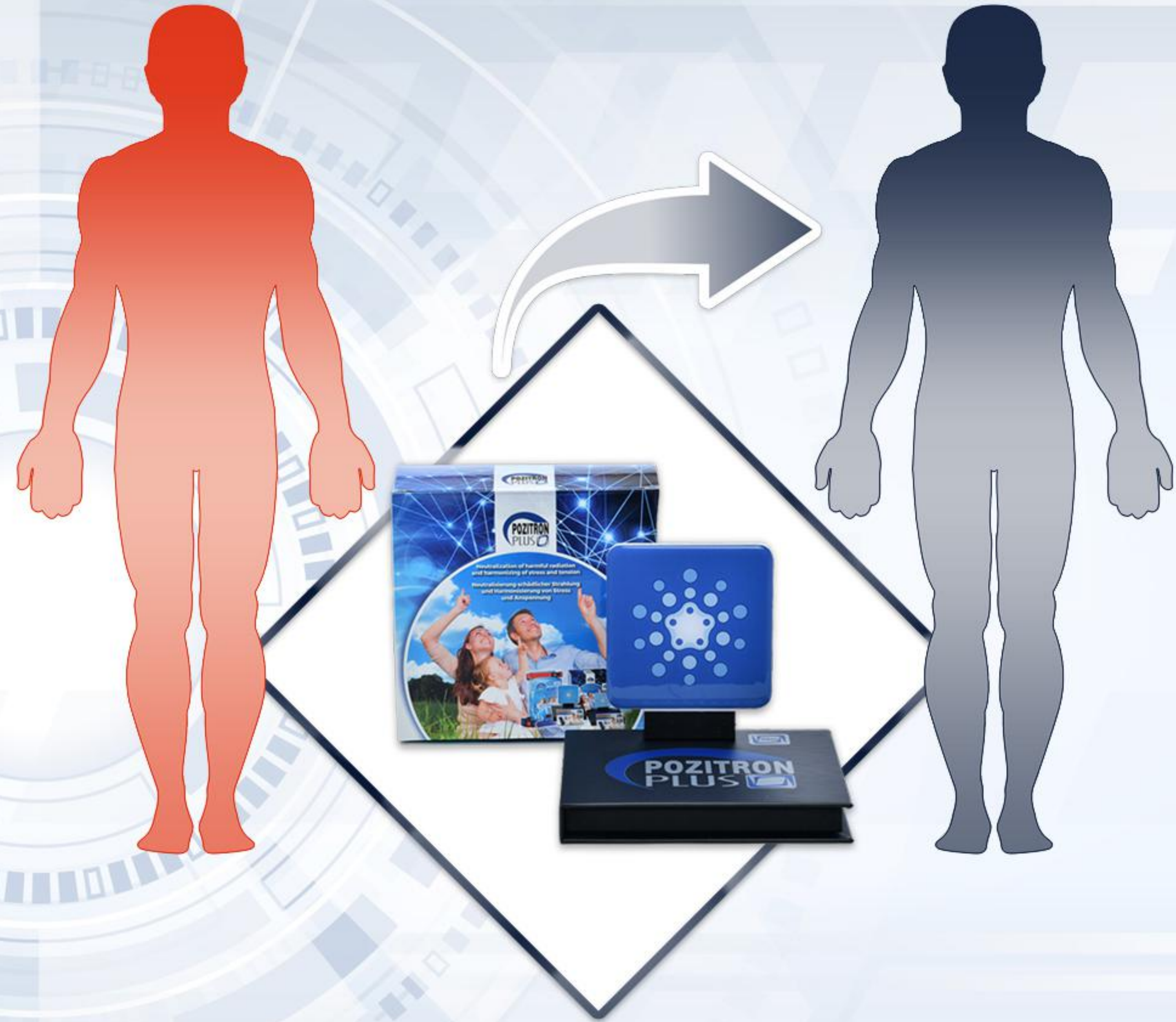
All organs and organ systems in the human body are interconnected by **MERIDIANS**. Meridians are energy channels through which the vital energy of the human body passes. There are **12 main meridians**, and **they connect approximately 1300 points** on the human body. The largest number of **MERIDIANS** ends **ON THE FINGERS OF THE HAND OR LEG**. During the test phase of the product using the device's precision probe for electro-acupuncture, **we performed several thousand flow tests energy of the human body** in residential and commercial spaces. First testing was done on a man who is in his own space, in which is not placed **POZITRON PLUS**.



After the completion of the first measurement, we immediately installed in the space **POZITRON PLUS – LIVING SPACE** with a radius of protection of 20 meters, in the immediate vicinity of the tested person. After the tested person was under direct influence for 15 minutes of **POZITRON PLUS** frequency, we immediately repeated the testing. The obtained results are read on the scale to which transfers the value of the measured energy flow to **MICRO AMPERES**. Physiological value of flow of energy ranges between 55 and 70 m/a. Measured energy flow below 55 m/a is **TOO SLOW**, and indicates on **WEAKER FLOW OF ENERGY**, which signals exhaustion of an individual organ or organ system, and possible degeneration of that organ. Flow above 70 m/a represents **TOO FAST ENERGY FLOW** through the tested organ, which signals a certain degree of stress, organ overstimulation by some drug or substance, or the existence of an inflammatory process in the tested organ. **Test results are always fascinating.**



Where in the first test the flow was too low or too high, in the second testing under the influence of frequencies of **POZITRON PLUS**, the energy flow returned to physiological dimensions between 55 and 70 m/a. In this way, we proved that in most residential and commercial spaces frequencies of electromagnetic radiation overload the energy potential of the human body too much, and consequently affect chronic fatigue and weakens immune system. When the human body is under the influence of **POZITRON PLUS**, energetic regeneration potential of the organism is strongly encouraged, because it comes to **NEUTRALIZATION OF TOO STRONG THIEVES OF HUMAN ENERGY WITHIN RESIDENTIAL OR BUSINESS SPACE.**



BEFORE AND AFTER USE OF
PRODUCT POZITRON PLUS 20m

A SOPHISTICATED SOLUTION FOR PROTECTING YOUR HEALTH



90% SAFER LIFE IN AN ENVIRONMENT OF MODERN TECHNOLOGIES!



It took 10 full years to develop and perfect the modern innovative product to protect human energy from negative impacts of geopathogenic and technical radiation - **POZITRON PLUS**. During that time, the product passed through rigorous testings in dozens of different ways. At the same time, he appeared at well - known innovation fairs throughout Europe, and won numerous **GOLD MEDALS, CERTIFICATES, PRESTIGIOUS AWARDS**, and in particular the **SCIENTIFIC CERTIFICATE** (Scientific Institute for Bioelectromagnetics and New Biology – **BION**) which is also valid in court and confirms the product's superior effect on instant lifting energy flow through all human organs and organic systems.

A **representative Croatian product** was created to conquer world markets - **POZITRON PLUS**. Enables people all over the world to protect their health in a family or business environment, so they live much more safely in the environment of modern technologies, use modern technical devices much more safely, and thus very a simple way with much greater certainty follow the technological revolution, which cannot be stopped!

PRODUCT CHARACTERISTICS OF POZITRON PLUS.

POZITRON PLUS IS MANUFACTURED FROM 6 TYPES OF SPECIALLY PROCESSED CELLULOID MATERIALS, THANKS TO THE ALMOST INCREDIBLE POSSIBILITIES OF NANO - TECHNOLOGY.

**EVERYTHING IN NATURE HAS ITS POLARITY,
IN THE FIRST PHASE OF PRODUCTION
BY ADJUSTABLE MATERIALS
THEN 40 POINTS ARE PRECISELY PREPARED
READY FOR FURTHER**

**IN THE SECOND PHASE WITH
40 POINTS ARE PROGRAMMED
THE MOLECULAR STRUCTURE**

**IN THAT PROCEDURE COMPLETELY CHANGES, which now AS A SMALL TRANSMITTER, POZITRON PLUS
PERMANENTLY PLACES A WIDE SPECTRUM OF PROGRAMMED FREQUENCIES IN THE SPACE AROUND IT.**

THIS IS HOW POZITRON PLUS WAS CREATED.



AS WELL AS CELLULOID MATERIAL.

**POLARITIES ARE DETERMINED
ACCORDING TO THE PROTECTED FORMULA,
FOR THE MATERIAL WHICH IS THEN
PROCESSING.**

**HELP OF NANO - TECHNOLOGY,
AND PROCESSED.
OF THE PROCESSED MATERIAL**

4 x PROTECTIVE FEATURES

1. **RAISES THE ENERGY FLOW OF ALL HUMAN ORGANS AND ORGAN SYSTEMS** by positive stimulation of the vegetative nervous system - on which it has an extremely calming effect, and in a few seconds the organism becomes energetically stronger and naturally more resistant to all external influences.
2. **PROTECTION OF HUMAN HEALTH BY DAY** – from the pathogenic spectrum of (INTERFERENCE) - pathogenic radiation of technical devices, wireless technology, repeaters, satellites, substations...
3. **PROTECTION OF HUMAN HEALTH AT NIGHT** - from **NATURAL GEOPATHOGENIC RADIATION (INTERFERENCE)** - (Hartmann radiation, Curry radiation, radiation of underground water courses).
4. **REVITALIZES THE ENERGY OF THE SPACE** (house, apartment, business premises, school, kindergarten, hotel...) - one part of the frequencies is programmed for lifting the mood and neutralizing stale negatives energy of the space, that's why we feel in a protected space a lot more **pleasant, calmer, brighter** and in a **better mood**.



HOW DOES POZITRON PLUS WORK?

6 layers of nano-technologically processed celluloid material emits its own programmed spectrum of frequencies into space. Part of the frequencies is responsible for instantly increasing the flow of energy through the entire human body, so that a person in a protected space naturally becomes more resistant to all external influences. Part of the frequencies enables the ultimate neutralization of the pathogenic spectrum of EM radiation in space (**technical and natural**), where according to the well-known law of physics **INTERFERENCE** - spectrum of programmed positive frequencies enters the wave of pathogenic frequencies and thus in the protected space completely neutralizes them (it does not block them, it just neutralizes them so that they no longer have any burdensome effect on human health). Some of the frequencies serve to raise the mood, so we can expect better interpersonal relations in that protected space, better concentration, significantly less negative energy, and people feel much better in such a space (**guarantee of better health**).

- **its effect does not cause interference with technical devices**
- **the service life is unlimited with proper use according to the instructions**
- **10 - year warranty**



1. ONE FREQUENCY SPECTRUM IS PROGRAMMED SO THAT ACCORDING TO A KNOWN LAW OF PHYSICS - INTERFERENCE - NEUTRALIZES THE PATHOGENIC SPECTRUM OF ELECTROMAGNETIC RADIATION OF ALL TECHNICAL DEVICES THAT RADIATE IN OUR ENVIRONMENT.



THIS MEANS THAT THE WAVES EMITTED BY THE POZITRON PLUS ENTER THE WAVES OF PATHOGENIC HARMFUL RADIATION, AND THAT'S HOW THEY COMPLETELY NEUTRALIZE THEM!

Electromagnetic radiation is still present around us, its strength can be measured, BUT THANKS TO THE POZITRON PLUS, ITS PATHOGENIC SPECTRUM THAT IS VERY STRESSFUL TO THE IMMUNOLOGICAL SYSTEM, AND FOR DAYS AND YEARS EXCESSIVELY EXHAUSTED HUMAN ENERGY, HAS BEEN COMPLETELY NEUTRALIZED.

It is VERY important to emphasize that POZITRON PLUS, DOES NOT CREATE ANY DISTURBANCE AT ALL TO ANY technical devices, DOES NOT BLOCK ELECTROMAGNETIC RADIATION, AND IT CAN'T DESTROY IT.

2. THE SECOND SPECTRUM ARE FREQUENCIES COMPATIBLE WITH PHYSIOLOGICAL FREQUENCIES OF THE HUMAN ORGANISM. THEY SIGNIFICANTLY AND VERY QUICKLY RAISE THE FLOW OF ENERGY THROUGH THE HUMAN ORGANISM, SO THE ORGANISM NATURALLY BECOME MORE RESISTANT TO ALL EXTERNAL INFLUENCES.

THUS THE PHYSIOLOGICAL FREQUENCIES OF POZITRON PLUS STIMULATE YOUR VEGETATIVE NERVOUS SYSTEM, BREAK ENERGY BLOCKAGES IN THE BODY AND THUS RAISE THE FLOW OF ENERGY THROUGH ALL HUMAN ORGANS. THANKS TO THIS, THE BODY ENERGY STRENGTHENS, AND YOU NATURALLY BECOME MORE RESISTANT TO INFLUENCE OF PATHOGENIC FREQUENCIES FROM YOUR ENVIRONMENT, AND YOU ALSO BECOME MORE RESISTANT TO THE ENTIRE SPECTRUM OF DIFFERENT DISEASES AND DISEASE CONDITIONS, BECAUSE YOUR ORGANISM HAS BECOME ENERGETICALLY AND IMMUNOLOGICALLY STRONGER UNDER THE INFLUENCE OF PHYSIOLOGICAL FREQUENCIES.

These are the two most powerful effects of POZITRON PLUS, which help the human organism TO USE MODERN TECHNOLOGIES THAT ALREADY EXIST, AND THOSE THAT ARE STILL COMING WITH MUCH MORE SAFETY...

3. IN ADDITION, WITH THE THIRD SPECTRUM OF PROGRAMMED FREQUENCIES, THE POZITRON PLACES A VERY STRONG POSITIVE ENERGY INTO THE SPACE, WHICH IS ESSENTIAL FOR RAISING THE MOOD IN THE SPACE, BUT IT ALSO LITERALLY CHANGES THE STAGGERED NEGATIVE ENERGY OF THE SPACE. IN THIS WAY, IT ADDITIONALLY HELPS PEOPLE IN THE SPACE TO FEEL BETTER, INTERPERSONAL RELATIONS ARE BETTER, PEOPLE ARE IN A CHEERER MOOD, LESS ARGUMENTAL, MORE RESISTANT TO STRESS AND TENSION, BETTER CONCENTRATION, BETTER WORK PERFORMANCE, AND ENABLES EVERYONE TO HAVE MORE POSITIVE LIFE ENERGY.

Certificates, Awards @ Evidence of Effectiveness



Dr.med. Krunoslav Jelaković
Prof. cert. radiest. Gordana Draganić
prof. Aleksandar Zalepugin - INVENTOR



SCIENTIFIC CERTIFICATE
INSTITUTE OF BIOELECTROMAGNETICS
AND THE NEW BIOLOGY
"BION"
LJUBLJANA, SLOVENIA



EUNES CERTIFICATE



HUPED CERTIFICATE



GOLD MEDAL AND
HONORARY CERTIFICATE
BRUXELLES, BELGIUM



INNOVATION FAIR
GOLDEN MEDAL,
CERTIFICATE
AND SPECIAL JURY
MENTION
BRUXELLES, BELGIUM



INNOVATION FAIR
A PRESTIGIOUS AWARD
CHRYSTAL, GLOBUS
NÜRNBERG, GERMANY



THE GOLD MASK WITH
SPECIAL ACKNOWLEDGEMENT
AND CERTIFICATE
NÜRNBERG, GERMANY



INNOVATION FAIR
A PRESTIGIOUS AWARD
FROM THE
FRENCH INSTITUTE FOR INNOVATION
GOLDEN ANGEL STATUE
BRUXELLES, BELGIUM



INNOVATION FAIR
INOVA ZAGREB
GOLDEN MEDAL
ZAGREB, CROATIA

We participated in numerous FAIRS INNOVATION, where we got IMPRESSIVE RESULTS! POZITRON PLUS is versatile award-winning PRODUCT with a proven track record with the effect on HUMAN HEALTH PROTECTION, RESIDENTIAL OR BUSINESS PREMISE. POZITRON PLUS Products owns top CERTIFICATES, SOLUTIONS AND AWARDS, with a SCIENTIFIC PROOF of a PROTECTIVE EFFECT ON THE HUMAN HEALTH.

WORLD VALUABLE CERTIFICATE OF FUNCTIONALITY - BION EUROPE



All the time we were striving to get **SCIENTIFIC CONFIRMATION** **FUNCTIONALITIES OF POZITRON PLUS!**

We tested the energy impact of the product on human health at the **FAMOUS EUROPEAN SCIENTIFIC INSTITUTE - BION!**

It is the **INSTITUTE OF BIOELECTROMAGNETICS AND NEW BIOLOGY (Ljubljana)**, where scientists performed **SCIENTIFIC TESTING** on two groups of test subjects using medical diagnostic devices. They obtained top results that were elaborated in scientific work, and thus the top performance of the product was proven at the scientific level.

That's how we got a **SCIENTIFIC CERTIFICATE** of the superior energy effect of the product on the rapid increase in the flow of human energy, which confirms the excellent **PROTECTIVE EFFECT OF POZITRON PLUS.**

This **CERTIFICATE** is valid in **MEDICAL CIRCLES**, in **SCIENTIFIC CIRCLES**, and if necessary, it can also be used as evidence in court, confirming the scientific basis of the product's functioning.

SKIN CONDUCTIVITY

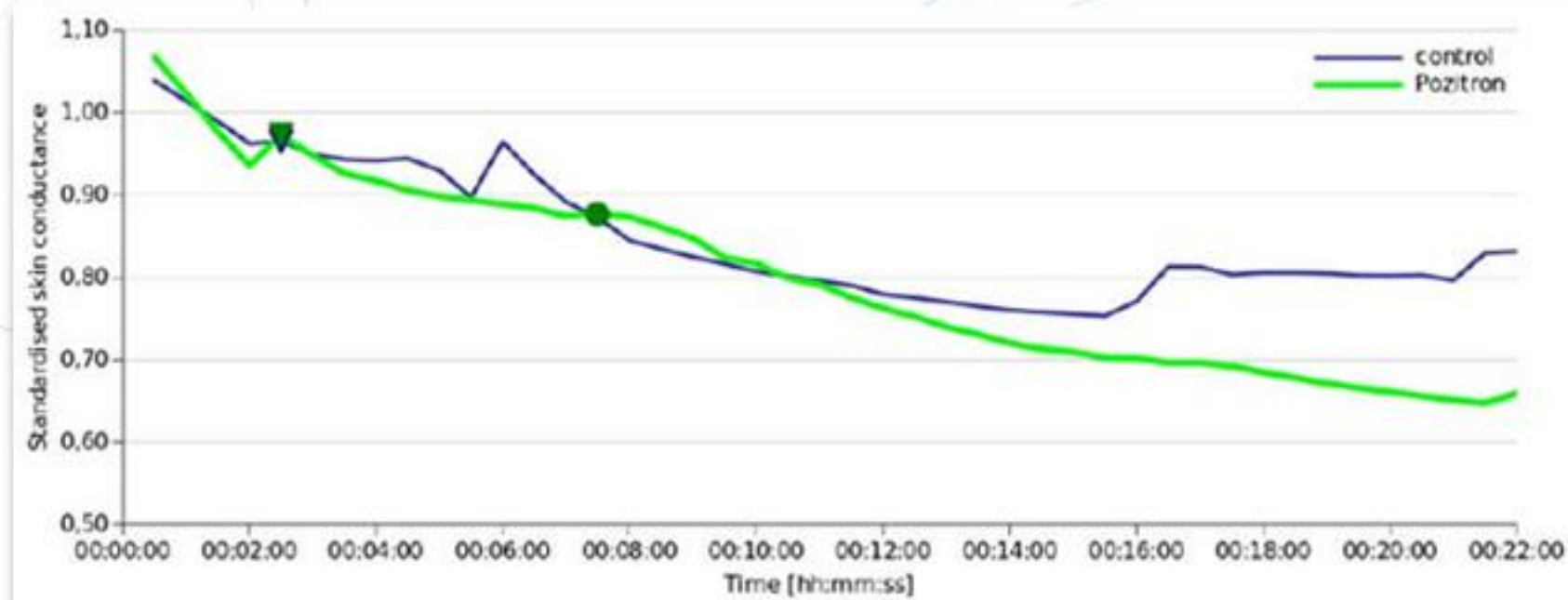


Figure 2: Standardised values for skin conductance (SC) calculated with medians of the ten testees for Pozitron (green line) and for control (blue line). The triangle on the line marks the beginning of calling phase, the circle marks the end of the calling phase.

BREATHING FREQUENCY

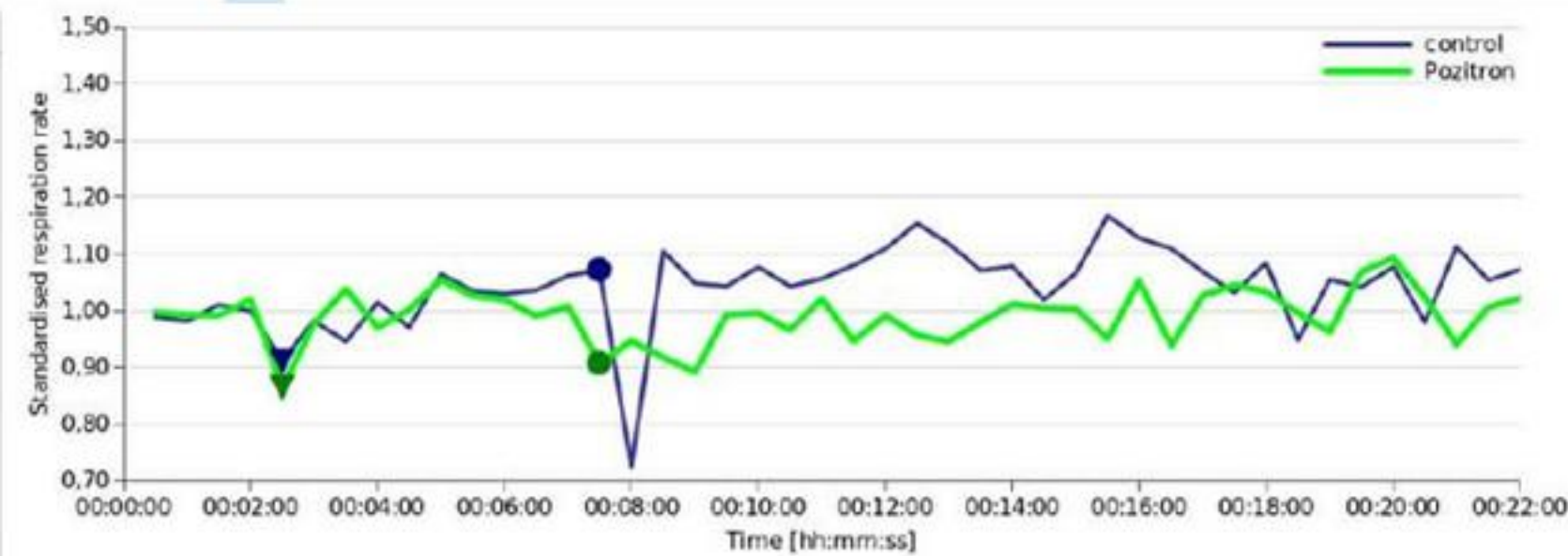


Figure 3: Standardised values for respiration rate (BPM) calculated with medians of the ten testees for Pozitron (green line) and for control (blue line). The triangle on the line marks the beginning of calling phase, the circle marks the end of the calling phase.

DEPTH OF BREATHING

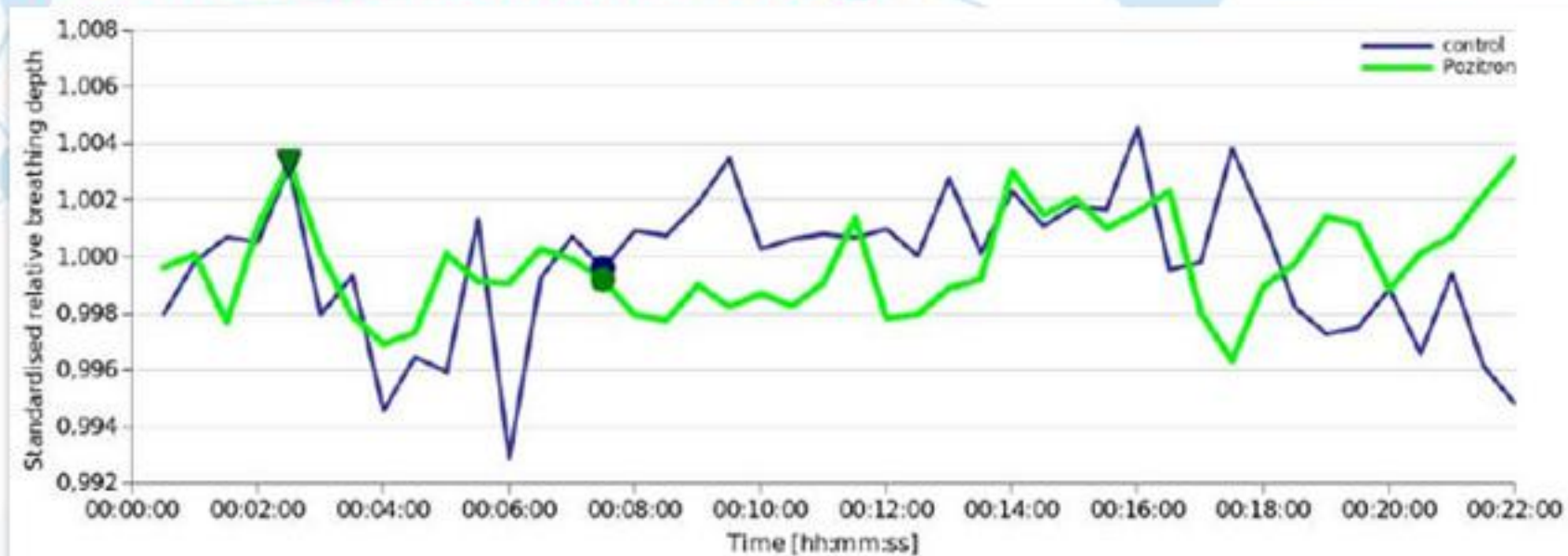


Figure 4: Standardised values for relative breathing depth (RESPV), calculated with medians of the ten testees for Pozitron (green line) and for control (blue line). The triangle on the line marks the beginning of calling phase, the circle marks the end of the calling phase.

BODY TEMPERATURE

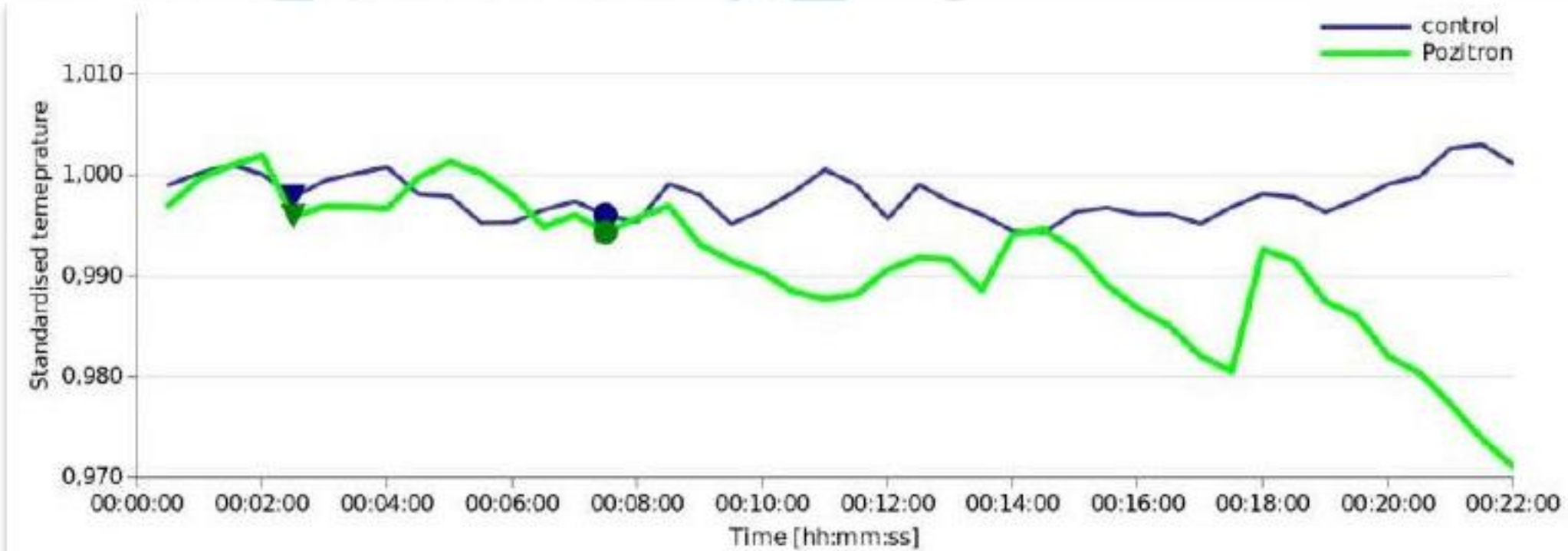


Figure 5: Standardised values for body temperature calculated with medians of the ten testees for Pozitron (green line) and for control (blue line). The triangle on the line marks the beginning of calling phase, the circle marks the end of the calling phase.

HEARTBEAT RHYTHM

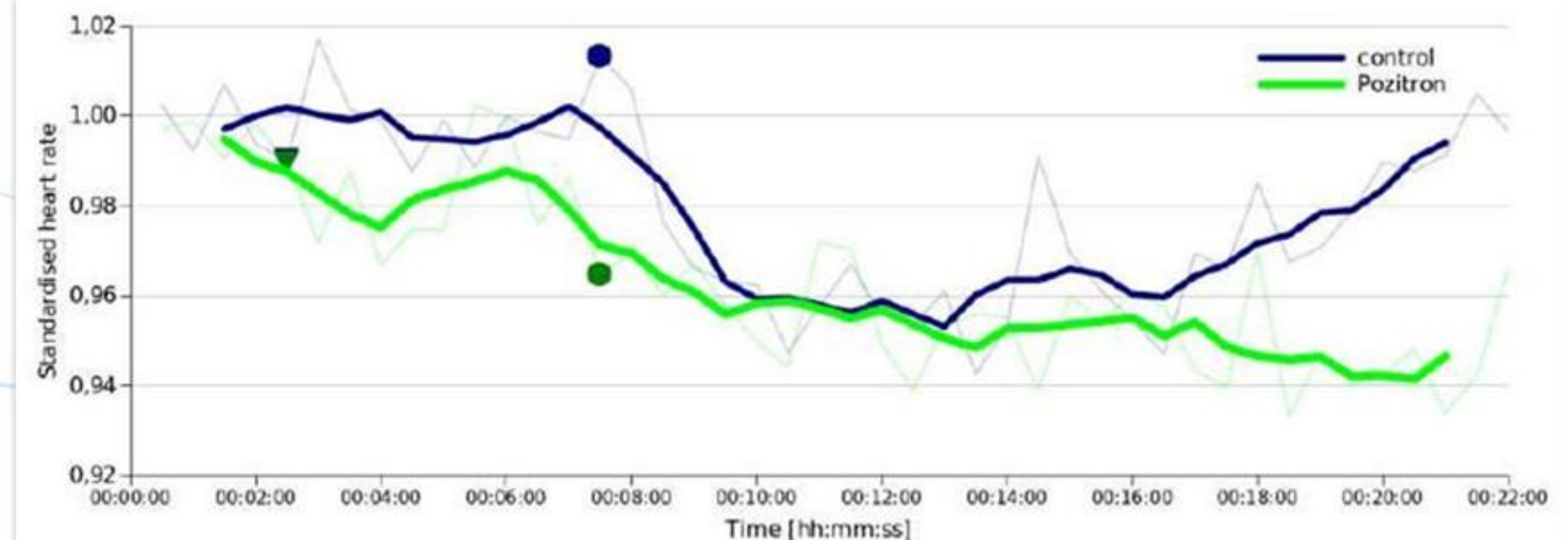


Figure 6: Standardised values for heart rate calculated with medians of the ten testees for Pozitron (green line) and for control (blue line). The triangle on the line marks the beginning of calling phase, the circle marks the end of the calling phase.

WORLD VALUABLE CERTIFICATE OF FUNCTIONALITY - BION EUROPE



All the time we were striving to get **SCIENTIFIC CONFIRMATION FUNCTIONALITIES OF POZITRON PLUS!**

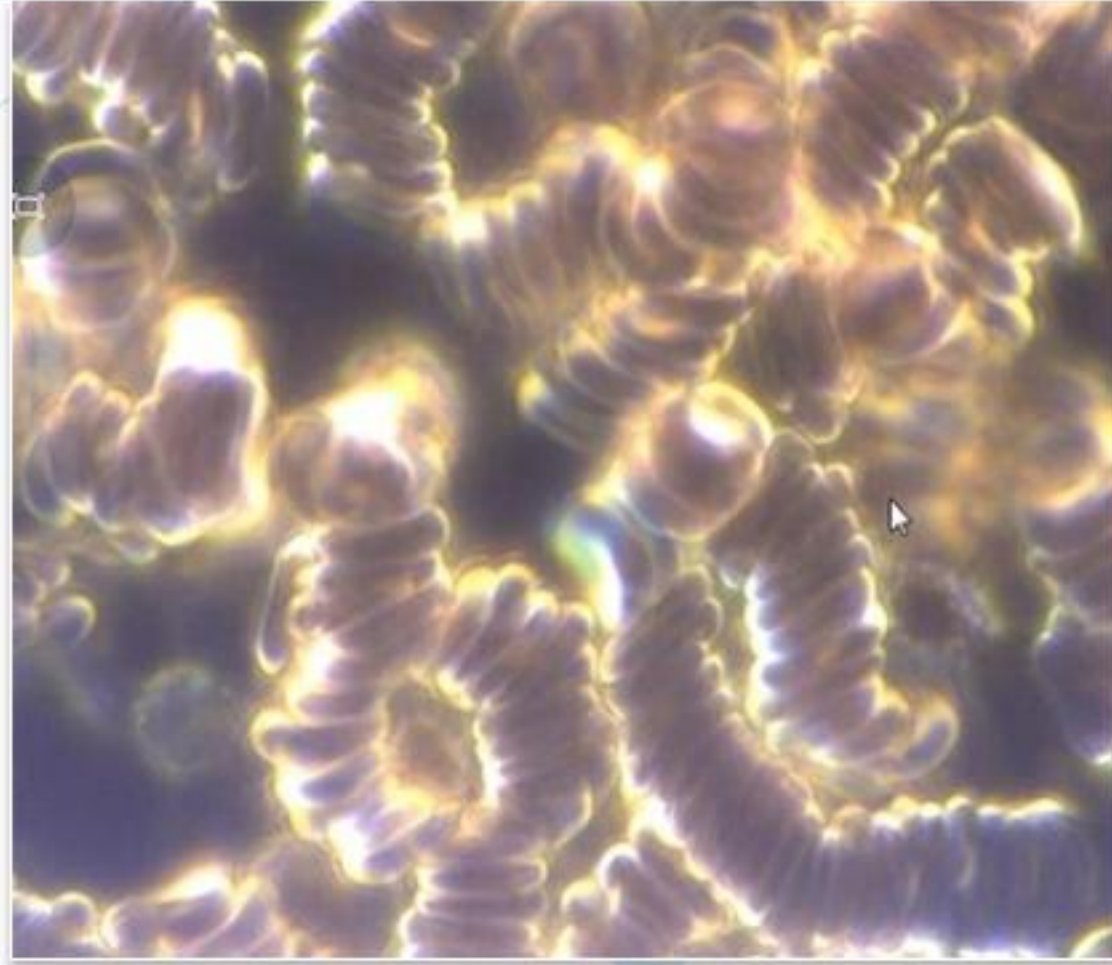
We tested the energy impact of the product on human health at the **FAMOUS EUROPEAN SCIENTIFIC INSTITUTE - BION!**

It is the **INSTITUTE OF BIOELECTROMAGNETICS AND NEW BIOLOGY (Ljubljana)**, where scientists performed **SCIENTIFIC TESTINGS** on two groups of test subjects using medical diagnostic devices. They obtained top results that were elaborated in scientific work, and thus the top performance of the product was proven at the scientific level.

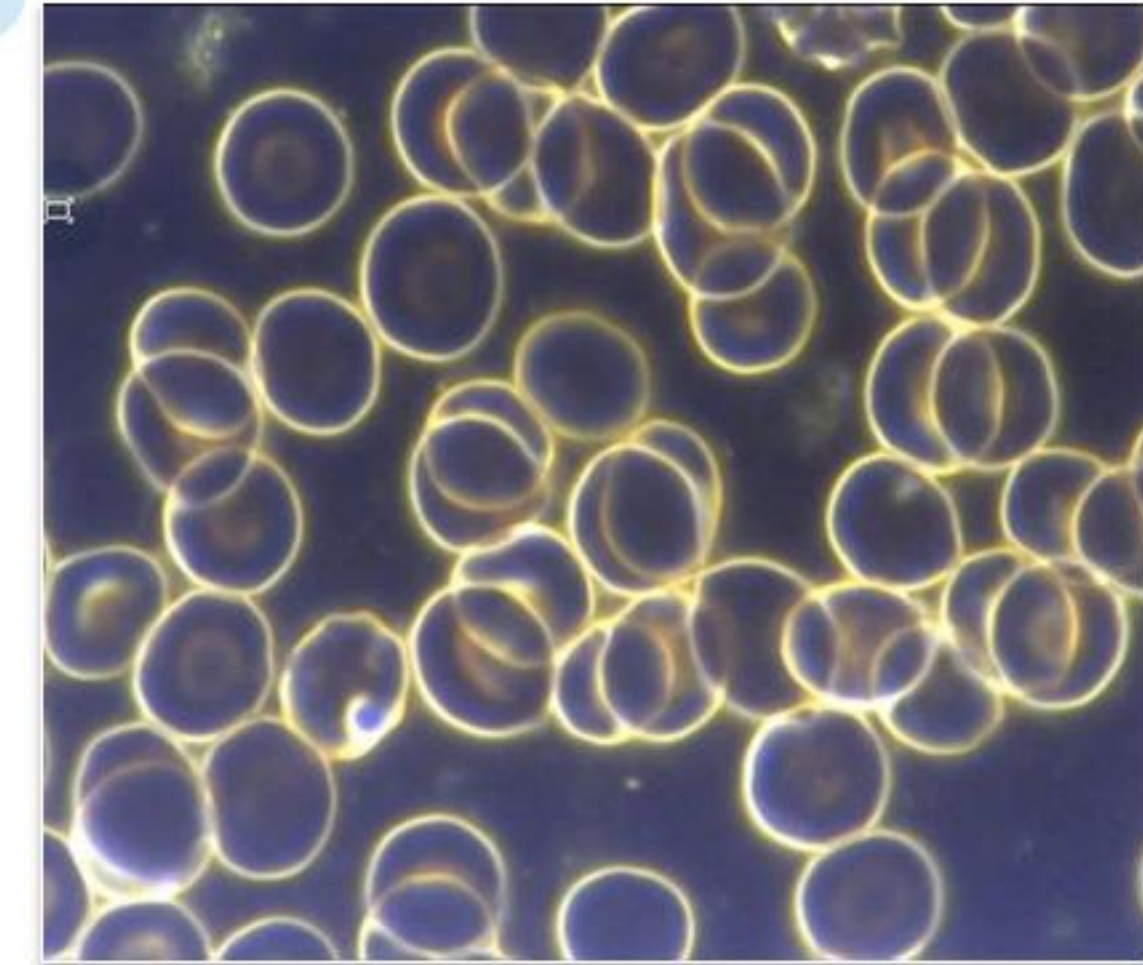
That's how we got a **SCIENTIFIC CERTIFICATE** of the superior energy effect of the product on the rapid increase in the flow of human energy, which confirms the excellent **PROTECTIVE EFFECT OF POZITRON PLUS ON THE HUMAN HEALTH!**

This **CERTIFICATE** is valid in **MEDICAL CIRCLES**, in **SCIENTIFIC CIRCLES**, and if necessary, it can also be used as evidence in court, confirming the scientific basis of the product's functioning.

Erythrocytes - TEST ON A LIVING DROP OF BLOOD - Dark-Field Microscopy



WITHOUT USING
POZITRON PLUS



AFTER 3 MIN. OF USING
POZITRON PLUS

The first photo was taken after the tested person played a game on a mobile phone for 15 minutes. Immediately after that, blood was taken from the finger and placed under a **DARK-FIELD MICROSCOPE** for analysis. Tape shows one of the most common causes of poor blood flow, the so-called "**rouleaux formation**" of red blood cells, or better known as the **COIN PHENOMENON**. Since this phenomenon began to appear in more than **80% of tested people** today, this phenomenon is increasingly associated with the too strong influence of aggressive **ELECTROMAGNETIC RADIATION** frequencies on the human body, due to the excessive amount of modern technical devices with which we have surrounded ourselves (**mobile phones, repeaters, tablets, laptops, circuits, console players, microwave ovens, WI-FI wireless internet, 4G network-5G network, satellites, etc.**).

The second photo shows that same person, who is once again played a game on the same mobile phone for 15 minutes, but next to it, on a work one table is set **POZITRON PLUS – OFFICE** (radius of protective effect 5 meters). Blood was taken from the finger again and analyzed under microscope. All people who had erythrocytes stuck after the first testing, after only 15 minutes of exposure to **POZITRON PLUS**, and retesting, they had nicely spaced and free erythrocytes! This alone accelerates the process of **freeing the body from toxins**, has far better supply of **all body cells with oxygen**, the balance of **energy flow throughout the whole organism is well established**, and thus **significantly increases the resistance of the organism to harmful radiation, numerous disease states and pain syndromes.**



RESULTS OF PIP-CAMERA TESTING (Polycontrast Interference Photography)

Recorded in the laboratory of prof. HARRY OLDFIELD – LONDON



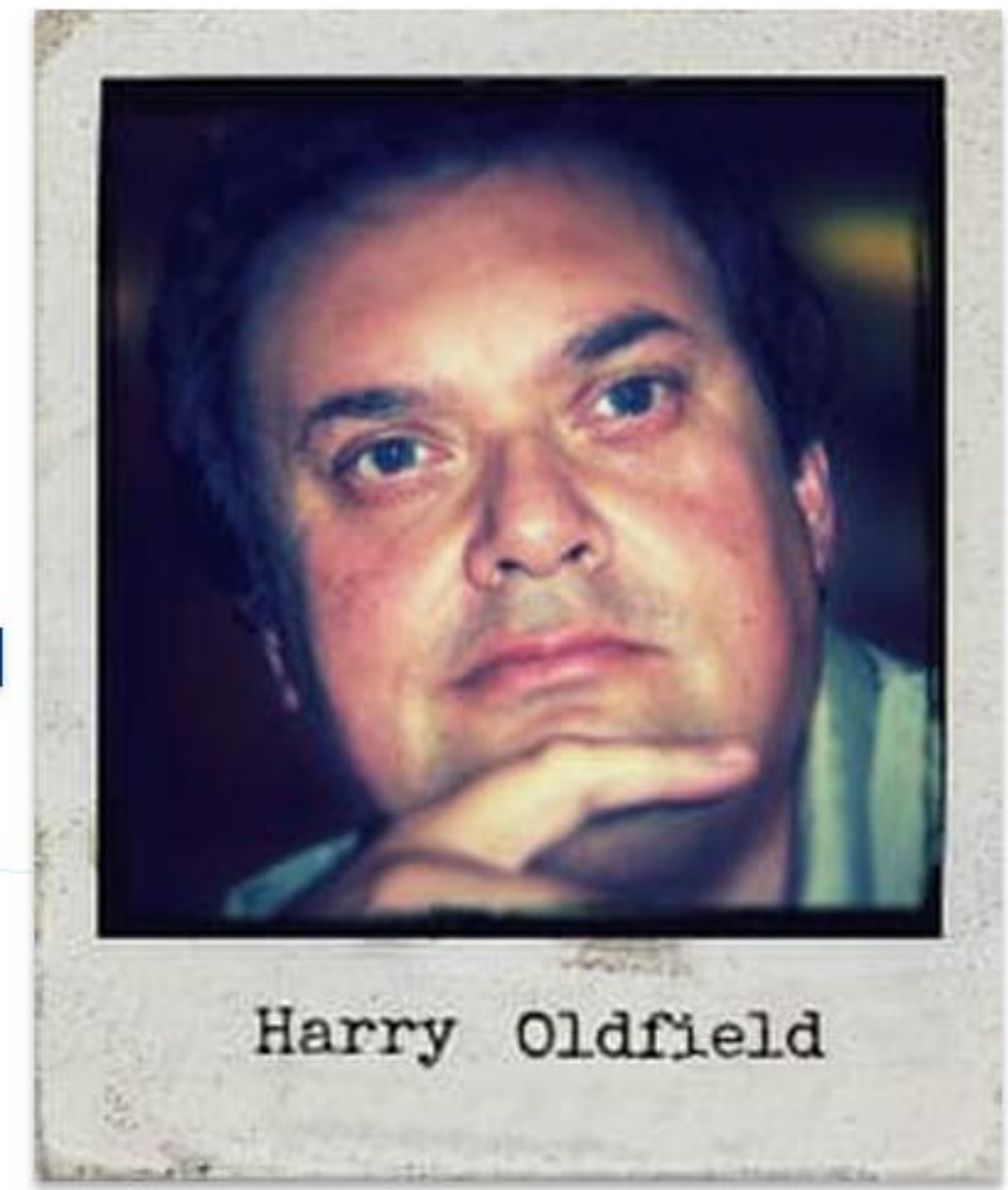
PICTURE 1.

Person's head captured by **PIP CAMERA** after only 10 seconds (the moment of connection with the repeater) of a conversation with a mobile phone that does not have **POZITRON PLUS** installed. The video shows the harmful effect of aggressive EM frequencies on the ear, head and neck area of a person (red/pink color).



PICTURE 2.

A person's head captured by a **PIP CAMERA** after just 10 seconds of talking with the same mobile phone, on which **POZITRON PLUS** is now installed. The video shows enhanced energy resistance in the place where the mobile phone is held (blue color indicating good energy) and dispersion of aggressive frequencies (red/pink color).



The first picture shows the head of a person, who was talking on a mobile phone **WITHOUT PROTECTION** 10 sec. immediately after connecting with the **REPEATOR**! Pay attention to **DAMAGE READ RED - PINK COLOR**, in the area around the ear, head and neck!

And now look at the second picture! It is a representation of the head of the same person, who also talked for 10 seconds. with the same mobile phone, in which **POZITRON PLUS** was installed immediately before the conversation! The **blue color indicates the absence of harmful energies.**

The following two photos also show very clearly:



WITHOUT POZITRON PLUS



WITH POZITRON PLUS

The first picture shows the back of a female person, who usually has problems with back pain, and she also stated occasional kidney problems! Pay attention to the **RED COLOR**, with which the **PIP CAMERA** indicates **BAD ENERGY!**

Now look at the second picture. The person took in her hands **POZITRON PLUS – PERSONAL**, which has a **3m** radius of protection, so look what happened to **RED COLOR**, and that only in ten seconds of activity!



TEST WITH BIOFEEDBACK DEVICES USING FREQUENCY ANALYSIS



WITHOUT POZITRON PLUS

PICTURE 1.

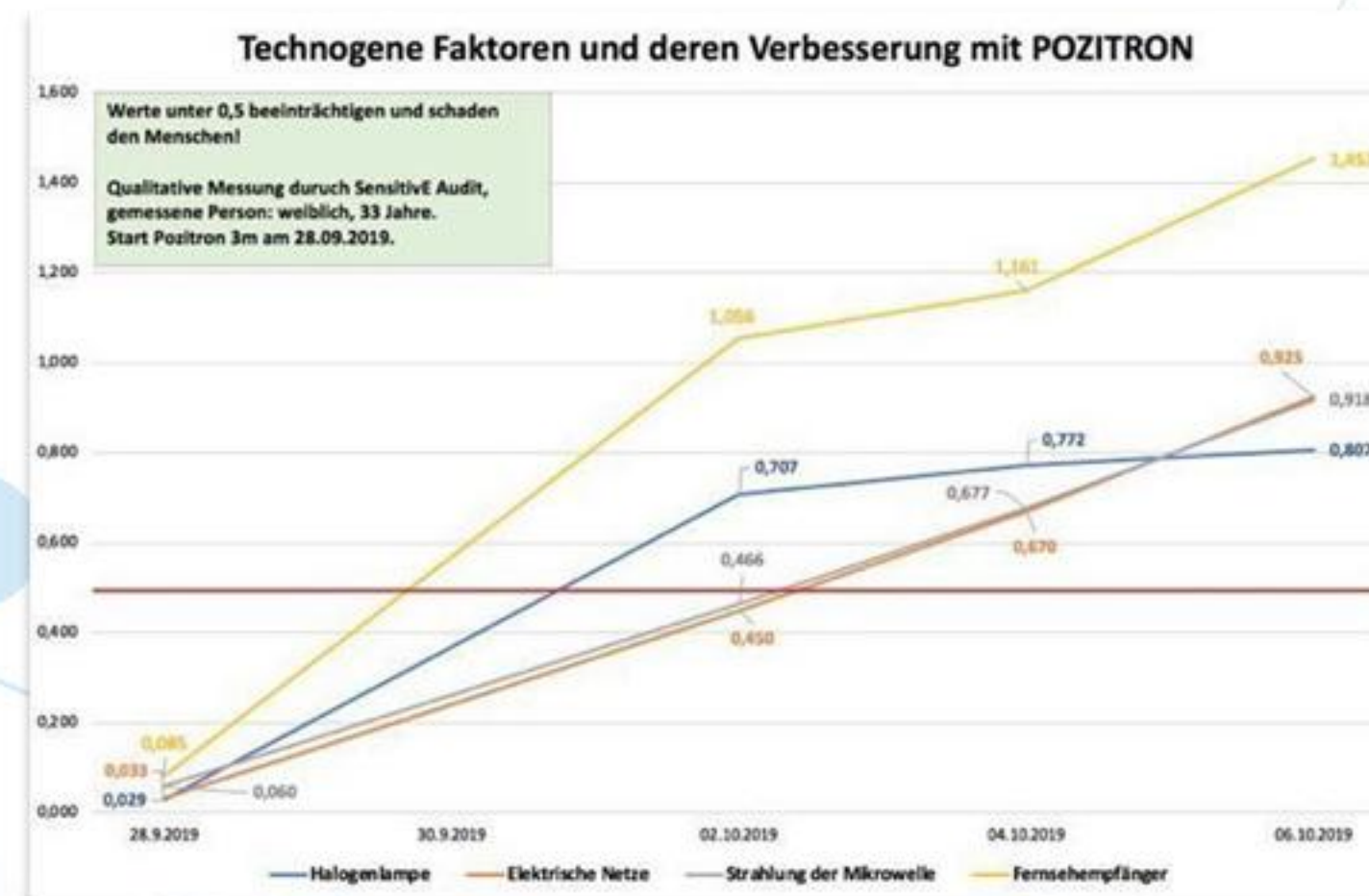
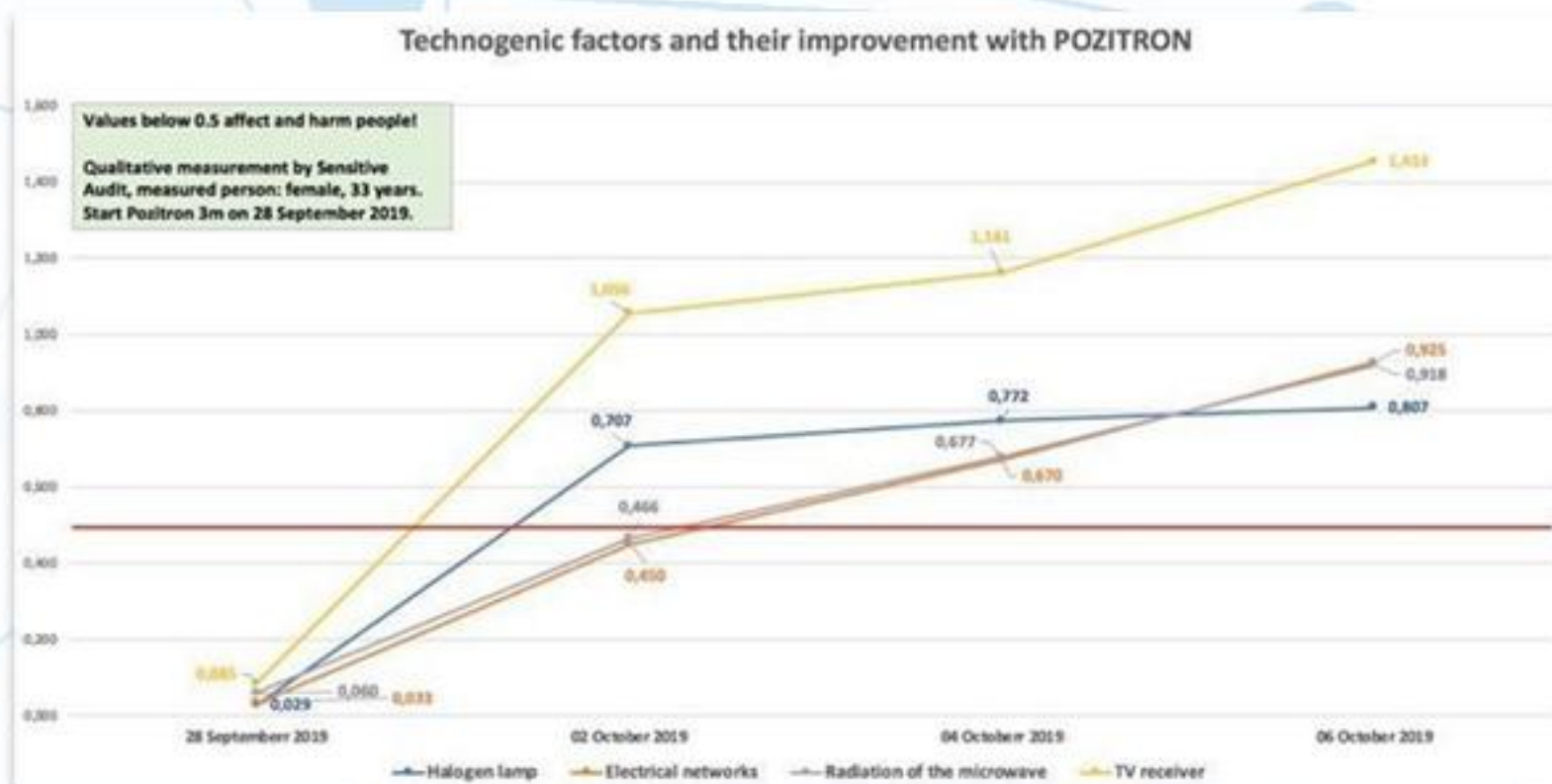
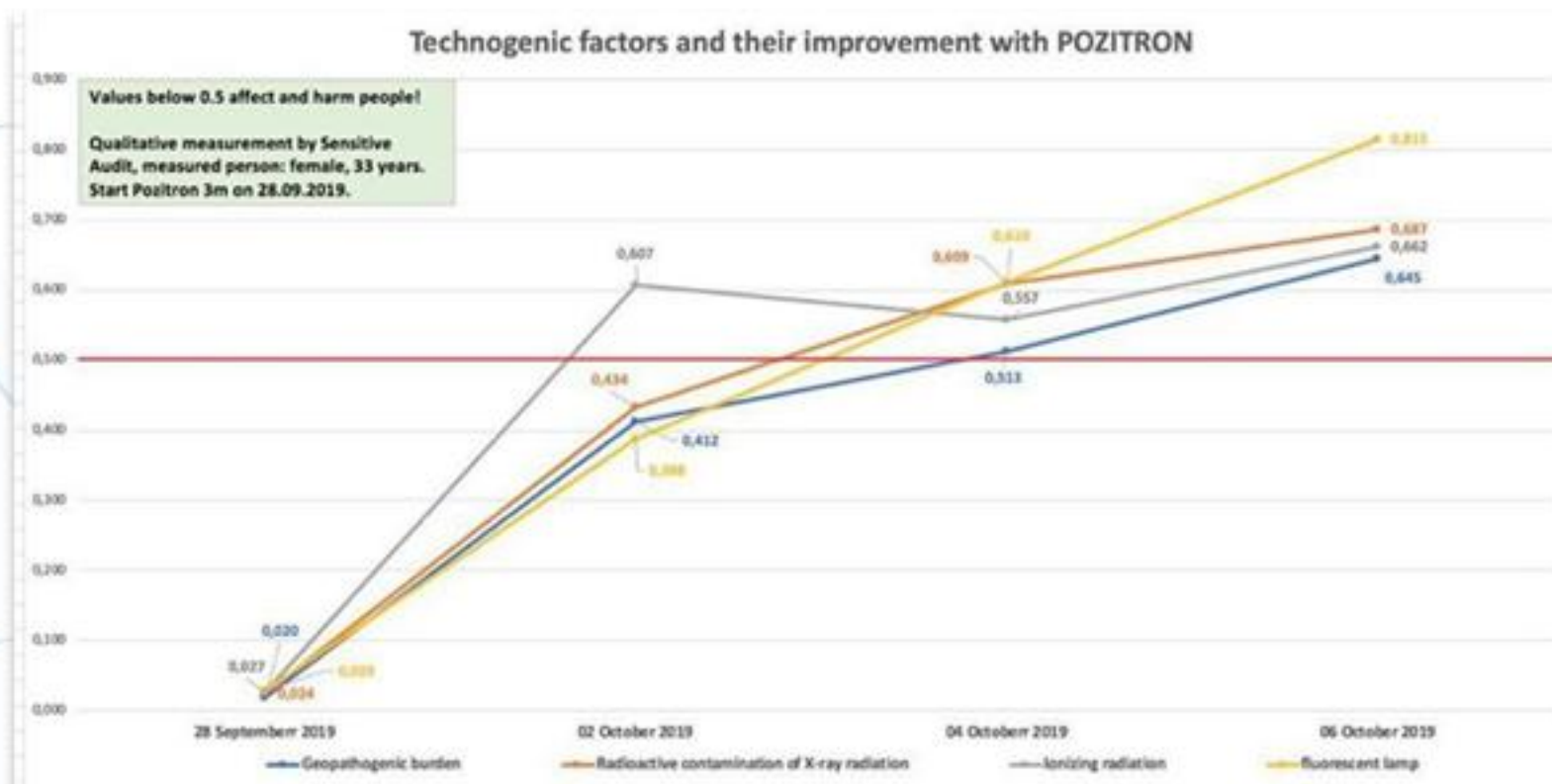
A person recorded immediately after a conversation with a mobile phone **NOT PROTECTED** with **POZITRON PLUS**. Pay attention to the representation of a large area of the body in **red color** - this is a **ZONE of BAD ENERGY FLOW**, caused by the influence of pathogenic mobile phone radiation. Also, it is very important to notice the **BLACK ZONE** on the neck (in the area of the thyroid gland), which signals a **COMPLETE BLOCKAGE OF ENERGY FLOW** (this is the side on which the tested person held the mobile phone).



WITH POZITRON PLUS

PICTURE 2.

View of that same person recorded immediately after the conversation with that same mobile phone **WHICH IS PROTECTED** with **POZITRON PLUS**. The black zone **NO LONGER EXISTS**. The red zone on the trunk has completely disappeared, the red zone on the head has faded significantly (zone of poor flow energy is significantly reduced). The recording is dominated by yellow and light green colors, which signal an **EXCELLENT FLOW OF ENERGY**.



(Testiranje stanja organizma radeno je sa BIOFEEDBACK uređajem SENSITIVE AUDIT.)

PRODUCT SELECTION - POZITRON PLUS



POZITRON PLUS
MOBILE PHONE 1m



POZITRON PLUS
PERSONAL 3m



POZITRON PLUS
OFFICE 5m



POZITRON PLUS
LIVING SPACE 20m



POZITRON PLUS
DEKONTAMINATOR

**+ PROTECTION
FOR YOUR PETS**



POZITRON PLUS
OFFICE SET



POZITRON PLUS
FAMILY SET



POZITRON PLUS
LARGE SPACE 100m



POZY ANIMAL
DOG PLACE





INCREASE YOUR OWN SECURITY



Protect Your Health.

IN AN ENVIRONMENT OF MODERN TECHNOLOGIES!





Protect Your Health.

-  - www.pozitronplus.com
-  - [@PozitronPlusProtection](https://www.facebook.com/PozitronPlusProtection)
-  - [POZITRON_PLUS](https://www.instagram.com/POZITRON_PLUS)
-  - pozitron.plus.2019@gmail.com